

IN THE CIRCUIT COURT OF THE SECOND JUDICIAL CIRCUIT,
IN AND FOR LEON COUNTY, FLORIDA

BLACK VOTERS MATTER CAPACITY
BUILDING INSTITUTE, INC., et al.,

Plaintiffs,

v.

LAUREL M. LEE, in her official capacity as
Florida Secretary of State, et al.,

Defendants.

Case No. 2022-ca-000666

**PLAINTIFFS' NOTICE OF FILING EXHIBITS IN SUPPORT OF
PLAINTIFFS' MEMORANDUM OF LAW IN SUPPORT OF MOTION FOR
TEMPORARY INJUNCTION**

Plaintiffs hereby give notice of the filing of Exhibits 1 through 12 to Plaintiffs' Memorandum of Law in Support of Motion for Temporary Injunction, as follows:

Exhibits - Part 1	
Exhibit 1	Affidavit of John Devaney
Exhibit 1-A	General Election Official Results webpage
Exhibit 1-B	Article "Florida lawmakers look to avoid running afoul of courts when redrawing districts."
Exhibit 1-C	Article "Ron DeSantis eyes court fight over Florida congressional map to reduce minority seats."
Exhibit 1-D	October 11, 2021 – Senate Meeting Packet
Exhibit 1-E	November 2, 2021 – House Meeting Packet
Exhibit 1-F	Webpage "About Florida Redistricting"
Exhibit 1-G, Part 1	January 10, 2022 – Senate Meeting Packet

Exhibits - Part 2	
Exhibit 1-G, Part 2	January 10, 2022 – Senate Meeting Packet (Cont'd)
Exhibit 1-G, Part 3	January 10, 2022 – Senate Meeting Packet (Cont'd)

Exhibits - Part 3	
Exhibit 1-H, Part 1	November 16, 2021 – Senate Meeting Packet
Exhibit 1-H, Part 2	November 16, 2021 – Senate Meeting Packet (Cont'd)

Exhibits - Part 4	
Exhibit 1-H, Part 3	November 16, 2021 – Senate Meeting Packet (Cont'd)
Exhibit 1-I, Part 1	November 29, 2021 – Senate Meeting Packet

Exhibits - Part 5	
Exhibit 1-I, Part 2	November 29, 2021 – Senate Meeting Packet (Cont'd)

Exhibits - Part 6	
Exhibit 1-J	December 2, 2021 – House Meeting Packet
Exhibit 1-K	January 13, 2022 – House Meeting Packet
Exhibit 1-L	February 24, 2022 – House Meeting Packet
Exhibit 1-M	Article “DeSantis says he will not sign legislation that has ‘unconstitutional gerrymander.’”
Exhibit 1-N	Article “Florida GOP in conflict: DeSantis’ redistricting expert doesn’t convince House panel.”

Exhibit 1-O	Article “Special session: Florida lawmakers heeding Gov. DeSantis’s demand for new congressional map, enraging opponents.”
Exhibit 1-P	Article “Florida House rejects Gov. DeSantis in rare clash on political redistricting.”
Exhibit 1-Q	Bill Analysis and Fiscal Impact Statement of CS/SB 102 dated January 10, 2022
Exhibit 1-R	March 4, 2022 Tweet from Gov. DeSantis
Exhibit 1-S	Article “DeSantis continues redistricting feud with GOP lawmakers by vetoing congressional map.”
Exhibit 1-T	Article “Gov. DeSantis vetoes congressional redistricting maps passed by Florida lawmakers.”
Exhibit 1-U	Article “Florida Legislature gives up, asks DeSantis for congressional maps.”
Exhibit 1-V	April 20, 2022 Transcript of House Legislative Session on Redistricting
Exhibit 1-W	Article “DeSantis signs new congressional map into law as groups sue over redistricting.”
Exhibit 1-X	Webpage “Statewide primary elections calendar”
Exhibit 1-Y	Webpage “Florida Black Population Percentage by County”
Exhibit 2	Affidavit of Dr. Stephen Ansolabehere attaching Expert Report
Exhibit 3	Affidavit of Dr. Sharon Austin attaching Expert Report
Exhibit 4	Affidavit of Pastor Reginald Gundy
Exhibit 5	Affidavit of Sylvia Young
Exhibit 6	Affidavit of Phyllis Wiley
Exhibit 7	Affidavit of Florida Rising Together
Exhibit 8	Affidavit of Cecile Scoon on behalf of the League of Women Voters of Florida Inc. and the League of Women Voters of Florida Education Fund, Inc.
Exhibit 9	Affidavit of Clifford Albright on behalf of Black Voters Matter Capacity Building Institute, Inc.
Exhibit 10	Affidavit of Jasmine Burney on behalf of Equal Ground Education Fund, Inc.
Exhibit 11	Affidavit of Joe Scott, Supervisor of Elections of Broward County
Exhibit 12	Affidavit of Mark Earley, Supervisor of Elections of Leon County

Dated: April 26, 2022

/s/ Frederick S. Wermuth
Frederick S. Wermuth
Florida Bar No. 0184111
Thomas A. Zehnder
Florida Bar No. 0063274
**KING, BLACKWELL, ZEHNDER &
WERMUTH, P.A.**
P.O. Box 1631
Orlando, Florida 32802
Telephone: (407) 422-2472
Facsimile: (407) 648-0161
fwermuth@kbzwlaw.com
tzehnder@kbzwlaw.com

John M. Devaney*
PERKINS COIE LLP
700 Thirteenth Street N.W., Suite 600
Washington, D.C. 20005
Telephone: (202) 654-6200
Facsimile: (202) 654-6211
jdevaney@perkinscoie.com

Respectfully submitted,

Abha Khanna*
Jonathan P. Hawley*
ELIAS LAW GROUP LLP
1700 Seventh Avenue, Suite 2100
Seattle, Washington 98101
Telephone: (206) 656-0177
Facsimile: (206) 656-0180
akhanna@elias.law
jhawley@elias.law

Christina A. Ford
Florida Bar No. 1011634
Joseph N. Posimato*
Graham W. White*
ELIAS LAW GROUP LLP
10 G Street NE, Suite 600
Washington, D.C. 20002
Phone: (202) 968-4490
Facsimile: (202) 968-4498
cford@elias.law
jposimato@elias.law
gwhite@elias.law

Counsel for Plaintiffs

**Pro hac vice application forthcoming*

CERTIFICATE OF SERVICE

I HEREBY CERTIFY that on April 26, 2022 I electronically filed the foregoing using the State of Florida ePortal Filing System, which will serve an electronic copy to counsel in the Service List below. I further certify that I have caused to be served, via Process Server, the foregoing on Defendants who have not yet made an appearance in this case.

/s/ Frederick S. Wermuth _____
Frederick S. Wermuth
Florida Bar No. 0184111

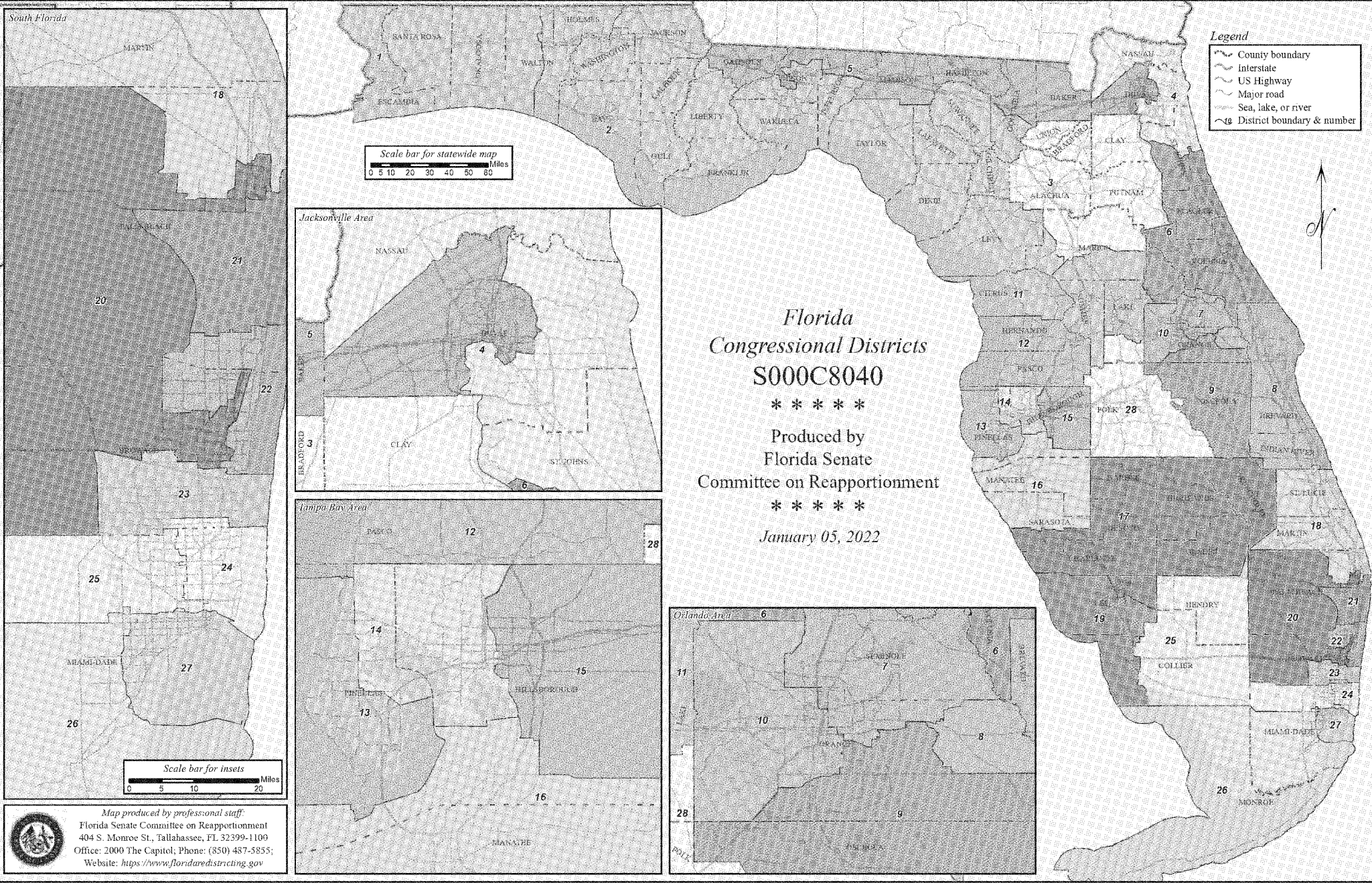
Counsel for Plaintiffs

SERVICE LIST

Andy Bardos, Esq.
GrayRobinson, P.A.
P.O. Box 11189
Tallahassee, FL 32302
andy.bardos@gray-robinson.com

Counsel for Defendants
Chris Sprowls and Thomas J. Leek

Exhibit G - Part 2



- Legend**
- County boundary
 - Interstate
 - US Highway
 - Major road
 - Sea, lake, or river
 - District boundary & number

Florida
Congressional Districts
S000C8040
 * * * * *
 Produced by
 Florida Senate
 Committee on Reapportionment
 * * * * *
 January 05, 2022

Map produced by professional staff:
 Florida Senate Committee on Reapportionment
 404 S. Monroe St., Tallahassee, FL 32399-1100
 Office: 2000 The Capitol, Phone: (850) 437-5855;
 Website: <https://www.floridaredistricting.gov>



Plan S000C8040

Dist.	Deviation		Voting Age Population:		Area (sq.mi.)	Perim. (mi.)	Convex Hull	Polsby-Popper Ratio	Reock	Counties		Cities		Political and Geographic Boundaries:					
	Total	%	Black	Hisp.						Whole	Parts	Whole	Parts	City	County	Road	Water	Rail	Non-Pol/Geo
	1	0.00%	15.54%	24.99%	2,550.1	265.8	0.80	0.43	0.46	48	50	367	96	13%	61%	19%	39%	2%	8%
1	0	0.00%	13.55%	6.69%	4,416	329	0.87	0.51	0.54	3	1	15	2	2%	81%	14%	55%	0%	2%
2	0	0.00%	13.32%	6.21%	15,879	884	0.71	0.26	0.28	15	5	55	4	4%	76%	19%	47%	0%	4%
3	0	0.00%	16.08%	10.45%	3,864	308	0.88	0.51	0.70	5	1	28	0	17%	74%	15%	24%	1%	8%
4	0	0.00%	10.79%	9.27%	1,553	332	0.66	0.18	0.34	1	2	6	2	24%	73%	17%	54%	2%	3%
5	0	0.00%	43.73%	9.04%	3,753	635	0.65	0.12	0.12	4	4	16	3	12%	74%	22%	13%	0%	2%
6	0	0.00%	9.70%	11.04%	2,770	332	0.73	0.31	0.33	1	3	20	4	6%	74%	7%	54%	2%	10%
7	0	0.00%	12.32%	25.39%	490	113	0.88	0.49	0.66	1	2	7	6	6%	43%	19%	32%	0%	34%
8	0	0.00%	9.58%	10.30%	2,301	272	0.75	0.39	0.32	1	2	21	0	0%	85%	6%	46%	0%	9%
9	0	0.00%	12.81%	50.24%	1,840	253	0.86	0.36	0.49	1	1	2	2	2%	76%	17%	31%	0%	8%
10	0	0.00%	28.33%	23.38%	453	103	0.89	0.54	0.51	0	1	8	5	14%	68%	31%	23%	0%	2%
11	0	0.00%	8.61%	10.59%	2,643	349	0.68	0.27	0.34	2	2	19	3	12%	70%	19%	38%	1%	7%
12	0	0.00%	6.55%	14.04%	1,764	194	0.90	0.59	0.55	2	1	8	1	3%	90%	10%	44%	0%	2%
13	0	0.00%	10.72%	9.05%	705	123	0.85	0.59	0.53	0	1	17	5	20%	62%	20%	74%	0%	6%
14	-1	0.00%	11.13%	26.93%	422	96	0.86	0.58	0.53	0	2	2	6	16%	27%	44%	20%	10%	6%
15	0	0.00%	21.98%	24.65%	677	109	0.97	0.71	0.59	0	1	2	1	9%	48%	35%	1%	12%	5%
16	0	0.00%	7.23%	13.73%	1,969	202	0.89	0.61	0.60	1	2	7	1	20%	58%	16%	53%	2%	5%
17	0	0.00%	9.02%	16.71%	5,797	382	0.82	0.50	0.47	6	2	11	2	4%	79%	10%	28%	1%	2%
18	0	0.00%	12.22%	14.87%	1,730	225	0.76	0.43	0.45	2	2	13	7	7%	70%	11%	48%	0%	10%
19	0	0.00%	4.37%	15.06%	1,894	236	0.79	0.43	0.33	0	2	7	1	3%	66%	18%	61%	1%	8%
20	0	0.00%	50.64%	22.15%	2,556	315	0.81	0.32	0.54	0	2	11	13	22%	42%	23%	11%	4%	15%
21	0	0.00%	16.53%	25.39%	345	98	0.77	0.45	0.48	0	1	18	3	34%	25%	23%	39%	0%	20%
22	0	0.00%	12.74%	20.40%	259	106	0.78	0.29	0.50	0	2	11	5	32%	25%	18%	36%	12%	15%
23	0	0.00%	16.90%	42.18%	239	80	0.85	0.47	0.43	0	1	6	6	53%	30%	28%	21%	0%	10%
24	0	0.00%	42.02%	37.76%	176	68	0.90	0.47	0.46	0	2	16	6	26%	36%	29%	46%	1%	18%
25	0	0.00%	7.96%	76.83%	3,680	364	0.67	0.35	0.40	1	2	10	3	7%	68%	16%	20%	0%	8%
26	0	0.00%	10.32%	73.35%	6,710	591	0.55	0.24	0.22	1	1	8	1	1%	88%	7%	86%	0%	1%
27	0	0.00%	7.07%	74.18%	280	70	0.95	0.73	0.71	0	1	6	2	9%	18%	35%	59%	0%	6%
28	0	0.00%	14.78%	23.18%	2,240	276	0.85	0.37	0.44	1	1	17	2	5%	90%	3%	26%	0%	5%

Overall numbers of county and city splits:

	In Plan S000C8040	
Number of Counties	67	412
Counties with only one district	48	367
Districts with only one county	6	45
Counties split into more than one district	19	372
Counties with all population in a single district	48	96
Aggregate number of county splits	50	91
Aggregate number of splits with population	50	
Number of Cities	412	
Cities with only one district	367	
Cities split into more than one district	45	
Cities with all population in only one district	372	
Aggregate number of city splits	96	
Aggregate number of splits with population	91	

District lines and City and County Boundaries

Plan S000C8040

Counties included in more than one district					
County	Dist.	Total Pop.	Pop%	Total Area	Area%
Broward	20	535,675	27.6%	888.0	67.9%
Broward	22	547,029	28.1%	168.8	12.9%
Broward	23	769,221	39.6%	238.9	18.3%
Broward	24	92,450	4.8%	12.6	1.0%
Collier	19	215,578	57.4%	639.5	24.6%
Collier	25	160,174	42.6%	1,965.6	75.5%
Columbia	2	51,337	73.7%	350.3	43.7%
Columbia	5	18,361	26.3%	451.0	56.3%
Duval	4	505,744	50.8%	454.9	49.5%
Duval	5	489,823	49.2%	463.6	50.5%
Hillsborough	14	592,149	40.6%	299.1	22.5%
Hillsborough	15	769,221	52.7%	676.6	50.8%
Hillsborough	16	98,392	6.7%	356.2	26.7%
Indian River	8	145,456	91.0%	609.1	98.7%
Indian River	18	14,332	9.0%	7.8	1.3%
Jefferson	2	4,410	30.4%	400.1	59.5%
Jefferson	5	10,100	69.6%	272.5	40.5%
Lake	6	35,396	9.2%	379.1	32.8%
Lake	11	304,385	79.3%	547.9	47.4%
Lake	28	44,175	11.5%	229.8	19.9%
Lee	17	207,179	27.2%	260.0	17.2%
Lee	19	553,643	72.8%	1,254.9	82.8%
Leon	2	145,318	49.7%	488.5	69.6%
Leon	5	146,880	50.3%	213.3	30.4%
Marion	2	39,930	10.6%	233.6	14.1%
Marion	3	154,737	41.2%	874.2	52.6%
Marion	11	181,241	48.2%	554.9	33.4%
Miami-Dade	24	676,771	25.1%	163.3	6.8%
Miami-Dade	25	569,428	21.1%	525.2	22.0%
Miami-Dade	26	686,347	25.4%	1,420.5	59.5%
Miami-Dade	27	769,221	28.5%	280.3	11.7%
Orange	7	262,969	18.4%	81.8	8.2%
Orange	8	17,153	1.2%	134.4	13.4%
Orange	9	380,565	26.6%	334.2	33.3%
Orange	10	769,221	53.8%	453.0	45.1%
Palm Beach	18	267,232	17.9%	281.3	11.8%
Palm Beach	20	233,546	15.7%	1,667.6	70.0%
Palm Beach	21	769,221	51.6%	344.5	14.5%
Palm Beach	22	222,192	14.9%	89.9	3.8%
Pinellas	12	12,815	1.3%	33.9	3.9%
Pinellas	13	769,221	80.2%	705.3	81.8%
Pinellas	14	177,071	18.5%	123.3	14.3%
Sarasota	16	271,119	62.5%	649.2	66.5%
Sarasota	17	162,887	37.5%	326.4	33.5%
St. Johns	4	173,125	63.3%	371.9	45.3%
St. Johns	6	100,300	36.7%	449.6	54.7%
Volusia	6	518,147	93.6%	1,370.0	95.6%
Volusia	7	35,396	6.4%	62.4	4.4%
Walton	1	47,648	63.3%	821.5	58.3%
Walton	2	27,657	36.7%	588.0	41.7%

Counties included in more than one district					
County	Dist.	Total Pop.	Pop%	Total Area	Area%

Counties included in more than one district					
County	Dist.	Total Pop.	Pop%	Total Area	Area%

Counties included in more than one district					
County	Dist.	Total Pop.	Pop%	Total Area	Area%

Plan S000C8040

Cities included in more than one district						Cities included in more than one district						Cities included in more than one district						Cities included in more than one district					
City	Dist	Total Pop	Pop%	Total Area	Area%	City	Dist	Total Pop	Pop%	Total Area	Area%	City	Dist	Total Pop	Pop%	Total Area	Area%	City	Dist	Total Pop	Pop%	Total Area	Area%
Belle Isle	9	216	3.1%	0.2	3.7%	Orlando	9	86,183	28.0%	63.9	53.7%												
Belle Isle	10	6,816	96.9%	5.0	96.3%	Orlando	10	185,916	60.5%	46.0	38.7%												
Clearwater	13	82,282	70.2%	25.4	70.8%	Palm Beach	18	2,634	28.5%	2.7	34.4%												
Clearwater	14	35,010	29.9%	10.5	29.2%	Palm Beach	21	6,611	71.5%	5.1	65.6%												
Clermont	11	43,021	100.0%	17.4	91.1%	Palm Beach Gardens	18	59,182	100.0%	59.3	99.9%												
Clermont	28	0	0.0%	1.7	8.9%	Palm Beach Gardens	20	0	0.0%	0.1	0.1%												
Cutler Bay	26	0	0.0%	0.0	0.2%	Pembroke Pines	23	170,725	99.7%	34.7	99.9%												
Cutler Bay	27	45,425	100.0%	10.3	99.8%	Pembroke Pines	24	453	0.3%	0.0	0.1%												
DeBary	6	9,468	42.5%	8.0	36.7%	Pinellas Park	13	53,093	100.0%	16.8	100.0%												
DeBary	7	12,792	57.5%	13.8	63.4%	Pinellas Park	14	0	0.0%	0.0	0.0%												
Deerfield Beach	20	29,350	33.8%	4.8	29.5%	Plantation	20	41,374	45.1%	9.0	40.9%												
Deerfield Beach	22	57,509	66.2%	11.4	70.6%	Plantation	23	50,376	54.9%	13.0	59.1%												
DeFuniak Springs	1	860	14.5%	3.7	25.9%	Pompano Beach	20	53,918	48.1%	11.3	45.8%												
DeFuniak Springs	2	5,059	85.5%	10.6	74.1%	Pompano Beach	22	58,128	51.9%	13.4	54.2%												
Deltona	6	76,307	81.4%	33.7	82.4%	Riviera Beach	18	9,951	26.5%	3.1	32.5%												
Deltona	7	17,385	18.6%	7.2	17.6%	Riviera Beach	20	27,653	73.5%	6.5	67.5%												
Eatonville	7	1,202	51.2%	0.5	41.7%	Royal Palm Beach	18	16,407	42.1%	5.0	42.9%												
Eatonville	10	1,147	48.8%	0.7	58.3%	Royal Palm Beach	20	17,861	45.9%	5.6	48.1%												
Fort Lauderdale	20	58,993	32.3%	13.0	35.7%	Royal Palm Beach	21	4,664	12.0%	1.1	8.9%												
Fort Lauderdale	22	102,735	56.2%	18.3	50.4%	St. Augustine	4	2,447	17.1%	1.6	12.1%												
Fort Lauderdale	23	21,032	11.5%	5.0	13.9%	St. Augustine	6	11,882	82.9%	11.3	87.9%												
Fort Myers	17	32,184	37.3%	19.8	40.4%	St. Petersburg	13	241,005	93.3%	124.6	94.9%												
Fort Myers	19	54,211	62.8%	29.2	59.6%	St. Petersburg	14	17,303	6.7%	6.7	5.1%												
Freeport	1	5,587	95.3%	15.3	80.4%	Sunrise	20	85,270	87.6%	14.1	77.8%												
Freeport	2	274	4.7%	3.7	19.6%	Sunrise	23	12,065	12.4%	4.0	22.2%												
Groveland	11	16,026	86.6%	24.3	93.0%	Tallahassee	2	82,107	41.9%	69.0	66.5%												
Groveland	28	2,479	13.4%	1.8	7.1%	Tallahassee	5	114,062	58.1%	34.8	33.5%												
Hallandale Beach	23	28,737	69.7%	3.0	65.9%	Tampa	14	263,534	68.5%	126.1	71.7%												
Hallandale Beach	24	12,480	30.3%	1.6	34.1%	Tampa	15	121,425	31.5%	49.8	28.3%												
Jacksonville	4	461,184	48.6%	412.9	47.2%	Tarpon Springs	12	11,582	46.1%	10.2	57.5%												
Jacksonville	5	488,427	51.4%	461.6	52.8%	Tarpon Springs	13	10,748	42.8%	5.8	32.7%												
Lake City	2	6,672	54.1%	6.1	49.9%	Tarpon Springs	14	2,787	11.1%	1.7	9.8%												
Lake City	5	5,657	45.9%	6.1	50.1%	Umatilla	6	1,415	38.4%	1.9	45.5%												
Lake Park	18	1,245	13.8%	0.4	17.1%	Umatilla	11	2,270	61.6%	2.3	54.5%												
Lake Park	20	7,802	86.2%	2.0	82.9%	Venice	16	12,178	47.8%	10.9	61.9%												
Largo	13	75,101	91.1%	17.1	87.5%	Venice	17	13,285	52.2%	6.7	38.1%												
Largo	14	7,384	9.0%	2.4	12.5%	West Palm Beach	18	18,256	15.6%	33.2	57.2%												
Maitland	7	13,664	69.9%	4.8	73.6%	West Palm Beach	20	63,092	53.7%	16.2	27.9%												
Maitland	10	5,879	30.1%	1.7	26.4%	West Palm Beach	21	36,067	30.7%	8.6	14.9%												
Margate	20	17,409	29.7%	2.5	27.6%	Winter Park	7	28,902	97.0%	10.0	96.6%												
Margate	22	41,303	70.4%	6.6	72.4%	Winter Park	10	893	3.0%	0.4	3.4%												
Miami	24	98,349	22.2%	15.0	26.7%																		
Miami	25	54,725	12.4%	4.8	8.5%																		
Miami	27	289,167	65.4%	36.3	64.8%																		
Miami Gardens	24	90,649	81.2%	15.2	79.8%																		
Miami Gardens	25	20,991	18.8%	3.8	20.2%																		
Miramar	23	76,594	56.9%	24.0	77.2%																		
Miramar	24	58,127	43.2%	7.1	22.8%																		
North Palm Beach	18	13,162	100.0%	5.3	99.5%																		
North Palm Beach	20	0	0.0%	0.0	0.6%																		
Oakland Park	20	15,037	34.0%	3.7	44.6%																		
Oakland Park	22	29,192	66.0%	4.5	55.4%																		
Opa-locka	24	9,537	57.9%	1.5	34.0%																		
Opa-locka	25	6,926	42.1%	3.0	66.0%																		
Orlando	7	35,474	11.5%	9.0	7.6%																		

Functional Analysis - Summary

Plan S000C8040

Dist.	2020 Census			2020 General Election Registered Voters															
	VAP who are:		RV who are:			RV who are:		Black Voters who are:			Hispanic Voters who are:			DEM who are:		REP who are:		NPAOth who are:	
	Black	Hisp	DEM	REP	OTH	Black	Hisp	DEM	REP	NPAOth	DEM	REP	NPAOth	Black	Hisp	Black	Hisp	Black	Hisp
5	43.73%	9.04%	54.34%	26.24%	19.43%	43.59%	4.83%	84.10%	2.75%	13.14%	44.56%	21.04%	34.20%	67.38%	3.96%	4.57%	3.87%	29.43%	8.50%
9	12.81%	50.24%	41.80%	23.16%	35.03%	9.28%	44.52%	71.84%	4.02%	24.11%	46.58%	13.81%	39.60%	15.95%	49.60%	1.61%	26.55%	6.39%	50.32%
10	28.33%	23.38%	45.07%	26.06%	28.86%	24.37%	16.10%	77.81%	3.25%	18.92%	45.58%	15.94%	38.45%	42.08%	16.28%	3.04%	9.85%	15.98%	21.45%
20	50.94%	22.15%	61.23%	13.99%	24.78%	46.67%	14.84%	81.44%	2.55%	16.00%	46.41%	17.36%	36.20%	62.07%	11.25%	8.50%	18.42%	30.12%	21.67%
24	42.02%	37.76%	60.07%	12.45%	27.48%	43.75%	26.79%	82.51%	2.43%	15.05%	42.80%	20.02%	37.16%	60.09%	19.09%	8.53%	43.09%	23.96%	36.22%
25	7.96%	74.85%	31.43%	36.54%	32.03%	6.97%	64.95%	79.64%	3.94%	16.25%	29.23%	35.98%	34.77%	17.66%	59.60%	0.75%	63.10%	3.54%	69.57%
26	10.32%	73.27%	33.92%	32.58%	33.51%	8.67%	63.25%	77.59%	3.48%	18.90%	28.78%	35.47%	35.74%	19.84%	54.23%	0.93%	69.60%	4.89%	68.18%
27	7.07%	74.18%	34.57%	33.39%	32.04%	6.14%	63.25%	78.61%	3.67%	17.61%	28.03%	38.96%	33.00%	13.97%	50.91%	0.67%	73.27%	3.38%	64.68%

Plan S000C8040

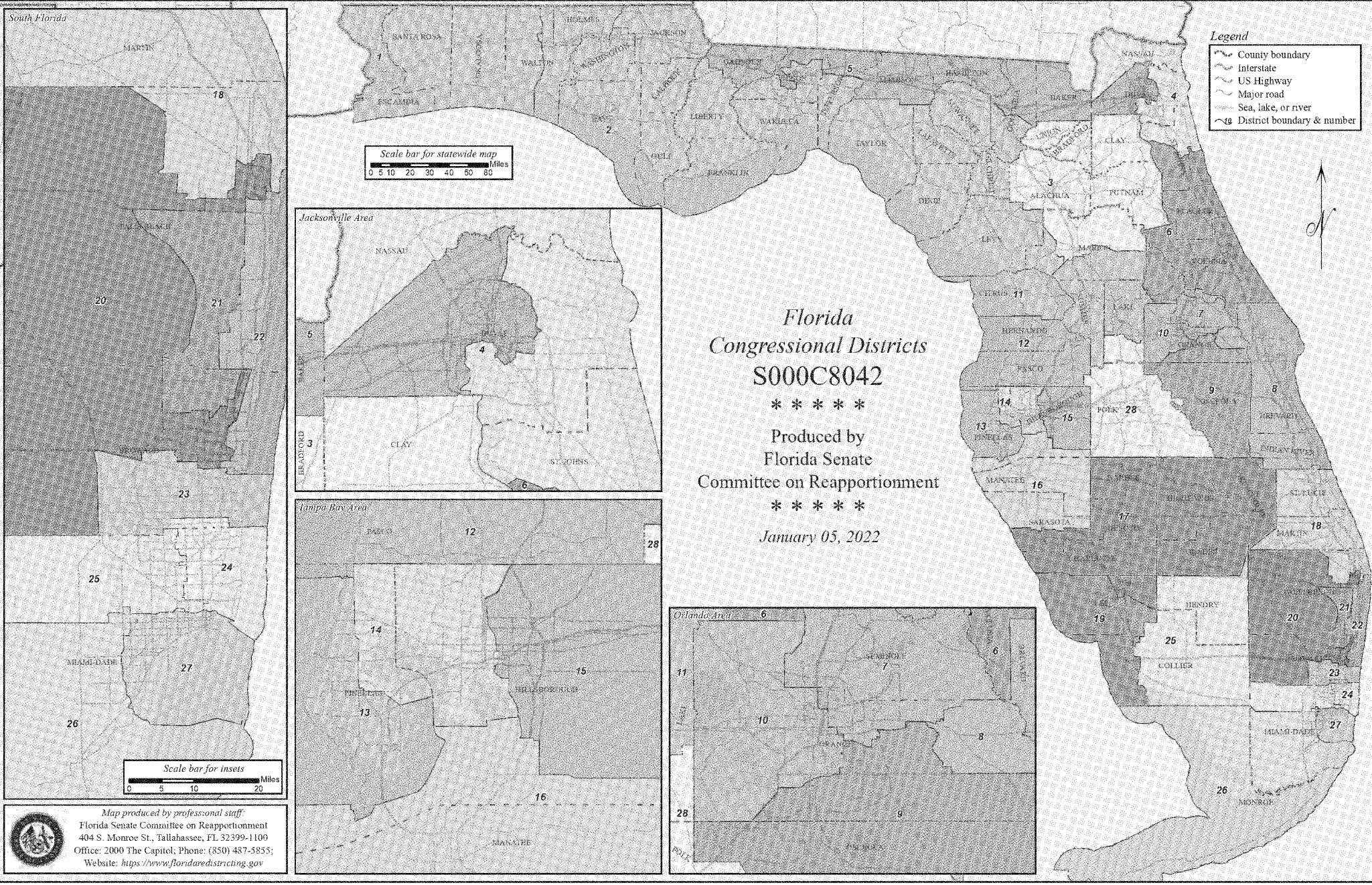
Dist.	2020 Census		Average Primary Election Turnout				Average General Election Turnout									General Election Performance in Statewide Elections 2012-2020												
	VAP who are:		DEM who are:		REP who are:		Voters who are:			DEM who are:		REP who are:		NPAOth who are:		Black Voters who are:			Hisp. Voters who are:			Avg. Perf.		Wins		Margins		
	Black	Hisp.	Black	Hisp.	Black	Hisp.	DEM	REP	NPAOth	Black	Hisp.	Black	Hisp.	Black	Hisp.	Black	REP	NPAOth	DEM	REP	NPAOth	DEM	REP	DEM	REP	MAX	MIN	AVG
5	43.73%	9.04%	66.22%	1.13%	2.81%	1.51%	58.13%	28.64%	13.23%	65.88%	2.59%	3.31%	2.83%	25.94%	6.77%	89.70%	2.22%	8.05%	45.52%	25.69%	28.14%	58.5%	40.1%	14	0	D +32.4%	D +7.1%	D +18.8%
9	12.81%	50.24%	18.82%	35.24%	1.05%	14.10%	43.37%	29.02%	27.61%	17.51%	43.60%	1.32%	19.42%	6.11%	41.61%	78.50%	3.95%	17.46%	52.57%	15.53%	31.90%	57.3%	40.9%	12	2	D +34.4%	D +0.9%	D +16.7%
10	28.33%	23.38%	48.65%	7.79%	1.94%	4.80%	45.72%	32.02%	22.26%	44.50%	12.76%	2.18%	7.05%	13.88%	16.65%	84.23%	2.88%	12.87%	49.38%	19.11%	31.43%	57.5%	40.9%	12	2	D +29.1%	R +1.5%	D +17.2%
20	30.04%	22.15%	64.04%	4.47%	6.25%	9.69%	66.46%	14.61%	18.92%	62.17%	8.59%	6.94%	14.36%	28.30%	18.16%	86.61%	2.12%	11.23%	50.45%	18.81%	30.57%	78.1%	21.0%	14	0	D +65.1%	D +50.7%	D +57.3%
24	42.02%	37.76%	67.48%	10.63%	7.00%	47.13%	66.57%	12.13%	21.30%	62.81%	15.65%	7.51%	42.22%	23.92%	34.11%	87.45%	1.90%	10.62%	45.30%	22.77%	31.86%	80.3%	18.8%	14	0	D +68%	D +49.4%	D +61.6%
25	7.96%	75.83%	26.60%	42.55%	0.43%	61.13%	32.92%	41.38%	25.70%	20.79%	53.26%	0.57%	61.19%	3.39%	66.94%	85.82%	2.98%	11.07%	29.10%	42.27%	28.61%	45.0%	53.8%	3	11	R +20.4%	D +2.6%	R +8.6%
26	10.32%	73.45%	22.58%	36.25%	0.57%	65.42%	35.69%	36.75%	27.56%	21.18%	47.57%	0.77%	66.17%	4.67%	64.29%	82.77%	3.10%	14.10%	28.65%	41.33%	30.00%	50.7%	48.0%	9	5	D +15.7%	R +2.2%	D +3%
27	7.07%	74.58%	17.87%	36.73%	0.39%	75.66%	35.72%	38.10%	26.18%	15.24%	45.38%	0.52%	72.02%	3.19%	63.12%	83.83%	3.09%	12.93%	26.85%	45.71%	27.44%	50.6%	48.3%	9	5	D +17.4%	R +0.6%	D +2.7%

Functional Analysis - Returns

		5	9	10	20	24	25	26	27	
Plan S000C8040		BVAP	41.73%	12.81%	28.33%	50.08%	42.02%	7.96%	10.32%	7.07%
Primary Elections		HVAP	9.04%	50.24%	23.38%	22.15%	37.76%	6.33%	73.35%	74.13%
2018	Governor (REP)	R_Baldauf	0.70%	0.84%	0.71%	1.36%	1.92%	1.93%	1.83%	1.50%
		R_DeSantis	52.44%	52.75%	52.09%	62.76%	66.52%	65.93%	67.74%	67.69%
		R_Devine	1.13%	1.98%	1.43%	2.20%	3.24%	2.92%	3.34%	3.09%
		R_Langford	1.13%	1.44%	1.65%	1.86%	1.97%	1.41%	1.72%	1.53%
		R_Mercadante	0.42%	1.28%	0.76%	1.51%	2.13%	1.93%	2.06%	2.14%
		R_Nathan	0.71%	1.00%	0.82%	1.54%	2.72%	1.13%	1.42%	1.39%
		R_Putnam	41.63%	37.93%	40.26%	25.36%	17.05%	21.84%	18.17%	18.84%
	R_White	1.62%	2.61%	2.11%	2.89%	3.92%	2.63%	3.54%	3.46%	
	Governor (DEM)	D_Gillum	58.39%	29.99%	45.49%	52.96%	50.35%	32.88%	31.83%	28.95%
		D_Graham	22.26%	29.75%	28.40%	13.34%	11.17%	19.31%	21.15%	22.65%
		D_Greene	5.72%	13.96%	8.69%	10.39%	9.34%	9.66%	10.62%	7.94%
		D_King	1.43%	4.29%	3.76%	0.94%	0.75%	2.33%	2.11%	1.54%
		D_Levine	10.71%	19.18%	12.46%	21.58%	27.53%	32.70%	32.23%	37.17%
		D_Lundmark	0.49%	1.12%	0.44%	0.30%	0.38%	1.37%	0.91%	0.78%
	D_Wetherbee	0.83%	1.64%	0.66%	0.38%	0.32%	1.27%	0.97%	0.68%	
	Attorney General (REP)	R_Moody	57.78%	54.44%	55.46%	55.57%	53.16%	52.08%	54.82%	54.79%
		R_White	42.22%	45.50%	44.57%	44.27%	46.64%	47.88%	45.11%	45.20%
	Attorney General (DEM)	D_Shaw	78.66%	61.11%	74.44%	81.44%	82.10%	67.77%	69.58%	74.09%
		D_Torrens	21.31%	38.88%	25.57%	18.56%	17.89%	32.10%	30.43%	25.91%
	Agriculture Commissioner (REP)	R_Caldwell	35.67%	36.42%	34.83%	43.50%	39.73%	42.29%	42.07%	40.18%
		R_Grimsley	21.36%	31.97%	31.49%	25.91%	31.44%	29.71%	31.57%	32.70%
R_McCalister		8.68%	16.25%	15.43%	21.17%	17.11%	12.78%	16.62%	16.76%	
Agriculture Commissioner (DEM)	R_Troutman	34.12%	15.22%	18.23%	9.04%	11.06%	15.05%	9.61%	10.37%	
	D_Fried	60.09%	55.10%	55.25%	63.92%	59.04%	52.18%	53.25%	59.89%	
	D_Porter	20.04%	18.57%	17.46%	16.10%	17.36%	20.02%	20.45%	15.13%	
US Senate (REP)	D_Walker	19.86%	26.32%	27.30%	19.96%	23.60%	27.59%	26.21%	24.88%	
	R_De La Fuente	10.20%	10.06%	11.29%	14.88%	15.74%	9.81%	12.28%	12.63%	
US Senate (DEM)	R_Scott	89.71%	89.89%	88.72%	84.91%	84.06%	90.09%	87.66%	87.32%	
	R_Beruff	22.31%	17.11%	17.64%	14.64%	8.73%	8.85%	6.43%	5.58%	
US Senate (REP)	R_Rivera	3.70%	3.21%	2.45%	5.03%	3.26%	2.20%	2.94%	1.88%	
	R_Rubio	68.00%	71.92%	74.53%	70.56%	80.12%	85.24%	85.70%	88.87%	
	R_Young	5.81%	7.56%	5.31%	9.37%	7.44%	3.59%	4.86%	3.46%	
US Senate (DEM)	D_De La Fuente	4.12%	14.95%	3.93%	3.17%	5.51%	19.30%	13.76%	12.16%	
	D_Grayson	17.53%	45.27%	40.72%	9.95%	10.82%	11.17%	11.16%	11.19%	
	D_Keith	15.18%	9.79%	12.71%	14.56%	13.82%	13.73%	15.63%	17.86%	
	D_Luster	12.08%	1.26%	2.28%	2.23%	2.68%	2.02%	1.68%	1.54%	
D_Murphy	50.94%	28.53%	40.28%	69.89%	66.91%	53.19%	57.51%	56.90%		
Governor (REP)	R_Adeshina	1.29%	1.69%	1.67%	2.66%	2.97%	1.46%	1.77%	1.80%	
	R_Cuevas-Neunder	8.09%	12.04%	9.60%	14.56%	16.32%	10.61%	15.19%	13.26%	
	R_Scott	90.47%	86.09%	88.64%	82.42%	80.36%	87.73%	82.95%	84.83%	
Governor (DEM)	D_Crist	74.34%	76.41%	78.84%	82.85%	84.35%	76.74%	78.42%	73.98%	
	D_Rich	25.58%	23.44%	21.17%	17.09%	15.61%	22.84%	21.48%	25.89%	
Attorney General (DEM)	D_Sheldon	60.86%	60.66%	49.68%	39.26%	46.77%	58.73%	61.40%	65.55%	
	D_Thurston	39.17%	39.26%	50.37%	60.66%	53.21%	40.91%	38.48%	34.37%	
US Senate (REP)	R_Mack	57.58%	49.35%	58.32%	65.26%	71.78%	73.46%	73.64%	77.15%	
	R_McCalister	18.65%	11.93%	10.93%	13.11%	6.85%	8.01%	7.36%	5.18%	
	R_Stuart	5.92%	6.58%	4.88%	7.25%	13.13%	12.37%	13.26%	12.99%	
	R_Weldon	17.45%	31.96%	25.74%	13.85%	8.00%	5.92%	5.67%	4.46%	
	D_Burkett	22.03%	19.38%	13.66%	14.24%	14.02%	21.21%	18.40%	14.76%	
US Senate (DEM)	D_Nelson	77.91%	80.61%	86.30%	85.70%	85.93%	78.58%	81.49%	85.11%	

Functional Analysis - Returns

			5	9	10	20	24	25	26	27
Plan 5000C8040		BVAP	43.73%	12.81%	28.33%	59.04%	42.02%	7.96%	10.32%	7.07%
General Elections		HVAP	9.04%	50.24%	23.38%	22.15%	37.76%	76.83%	79.35%	74.13%
2020	President	D_Biden	60.23%	58.79%	61.66%	75.53%	74.41%	40.98%	46.43%	49.44%
		R_Trump	38.62%	40.22%	37.34%	23.88%	25.06%	58.48%	52.99%	50.01%
2018	Governor	D_Gillum	62.51%	61.81%	62.29%	79.65%	81.56%	46.17%	52.49%	53.18%
		R_DeSantis	36.60%	36.87%	36.70%	19.73%	17.74%	52.44%	46.31%	45.75%
	Attorney General	D_Shaw	59.25%	58.41%	58.50%	78.13%	80.14%	44.45%	50.86%	51.99%
		R_Moody	39.21%	39.61%	39.86%	20.54%	18.30%	53.53%	46.94%	46.10%
	Chief Financial Officer	D_Ring	60.38%	60.81%	60.33%	79.52%	81.61%	45.82%	51.93%	52.59%
		R_Patronis	39.62%	39.19%	39.67%	20.46%	18.38%	54.17%	48.07%	47.41%
Agriculture Commissioner	D_Fried	61.38%	62.27%	62.23%	79.77%	82.11%	46.93%	53.44%	54.63%	
	R_Caldwell	38.63%	37.73%	37.77%	20.22%	17.88%	53.06%	46.56%	45.38%	
US Senate	D_Nelson	62.25%	60.52%	62.11%	79.66%	81.49%	46.47%	53.46%	54.47%	
	R_Scott	37.75%	39.48%	37.89%	20.33%	18.51%	53.52%	46.54%	45.52%	
2016	President	D_Clinton	58.51%	61.95%	60.09%	77.52%	81.10%	52.56%	56.46%	57.42%
		R_Trump	38.61%	34.53%	36.37%	20.71%	17.23%	45.16%	40.81%	40.05%
	US Senate	D_Murphy	52.82%	54.92%	54.84%	75.52%	76.02%	42.42%	47.69%	47.78%
R_Rubio		43.90%	41.03%	41.35%	22.53%	21.88%	55.35%	49.92%	50.17%	
2014	Governor	D_Crist	56.54%	52.80%	54.65%	79.64%	82.25%	43.00%	51.20%	50.00%
		R_Scott	39.85%	42.13%	40.77%	18.20%	16.17%	54.28%	45.89%	47.55%
	Attorney General	D_Sheldon	53.20%	49.01%	51.79%	75.88%	79.86%	38.72%	45.82%	46.03%
		R_Bondi	44.31%	48.13%	45.30%	22.66%	18.70%	58.94%	51.75%	51.96%
	Chief Financial Officer	D_Rankin	53.57%	48.88%	49.22%	75.36%	79.06%	40.24%	45.88%	43.49%
		R_Atwater	46.43%	51.12%	50.78%	24.62%	20.94%	59.75%	54.12%	56.53%
Agriculture Commissioner	D_Hamilton	55.57%	47.75%	49.27%	76.85%	79.82%	39.79%	46.04%	44.31%	
	R_Putnam	44.41%	52.25%	50.73%	23.15%	20.18%	60.19%	53.95%	55.69%	
2012	President	D_Obama	61.03%	61.43%	58.97%	80.43%	82.82%	51.07%	54.83%	52.22%
		R_Romney	38.14%	37.76%	40.24%	19.14%	16.82%	48.44%	44.61%	47.27%
	US Senate	D_Nelson	65.00%	65.98%	63.62%	81.94%	83.49%	52.79%	56.33%	54.47%
R_Mack		32.61%	31.57%	34.51%	16.83%	15.47%	45.07%	42.03%	44.15%	



- Legend**
- County boundary
 - Interstate
 - US Highway
 - Major road
 - Sea, lake, or river
 - District boundary & number

Florida
Congressional Districts
S000C8042
 * * * * *
 Produced by
 Florida Senate
 Committee on Reapportionment
 * * * * *
 January 05, 2022

Map produced by professional staff
 Florida Senate Committee on Reapportionment
 404 S. Monroe St., Tallahassee, FL 32399-1100
 Office: 2000 The Capitol, Phone: (850) 437-5855;
 Website: <https://www.floridaredistricting.gov>

Plan S000C8042

Dist.	Deviation		Voting Age Population:		Area (sq.mi.)	Perim. (mi.)	Convex Hull	Polsby-Popper Ratio	Reock Ratio	Counties		Cities		Political and Geographic Boundaries:					
	Total	%	Black	Hisp.						Whole	Parts	Whole	Parts	City	County	Road	Water	Rail	Non-Pol/Geo
	1	0.00%	15.54%	24.99%	2,550.1	266.7	0.80	0.43	0.44	48	51	366	100	13%	61%	20%	38%	2%	8%
1	0	0.00%	13.55%	6.69%	4,416	329	0.87	0.51	0.54	3	1	15	2	2%	81%	14%	55%	0%	2%
2	0	0.00%	13.32%	6.21%	15,879	884	0.71	0.26	0.28	15	5	55	4	4%	76%	19%	47%	0%	4%
3	0	0.00%	16.08%	10.45%	3,864	308	0.88	0.51	0.70	5	1	28	0	17%	74%	15%	24%	1%	8%
4	0	0.00%	10.79%	9.27%	1,553	332	0.66	0.18	0.34	1	2	6	2	24%	73%	17%	54%	2%	3%
5	0	0.00%	43.73%	9.04%	3,753	635	0.65	0.12	0.12	4	4	16	3	12%	74%	22%	13%	0%	2%
6	0	0.00%	9.70%	11.04%	2,770	332	0.73	0.31	0.33	1	3	20	4	6%	74%	7%	54%	2%	10%
7	0	0.00%	12.32%	25.39%	490	113	0.88	0.49	0.66	1	2	7	6	6%	43%	19%	32%	0%	34%
8	0	0.00%	9.58%	10.30%	2,301	272	0.75	0.39	0.32	1	2	21	0	0%	85%	6%	46%	0%	9%
9	0	0.00%	12.81%	50.24%	1,840	253	0.86	0.36	0.49	1	1	2	2	2%	76%	17%	31%	0%	8%
10	0	0.00%	28.33%	23.38%	453	103	0.89	0.54	0.51	0	1	8	5	14%	68%	31%	23%	0%	2%
11	0	0.00%	8.61%	10.59%	2,643	349	0.68	0.27	0.34	2	2	19	3	12%	70%	19%	38%	1%	7%
12	0	0.00%	6.55%	14.04%	1,764	194	0.90	0.59	0.55	2	1	8	1	3%	90%	10%	44%	0%	2%
13	0	0.00%	10.72%	9.05%	705	123	0.85	0.59	0.53	0	1	17	5	20%	62%	20%	74%	0%	6%
14	-1	0.00%	11.13%	26.93%	422	96	0.86	0.58	0.53	0	2	2	6	16%	27%	44%	20%	10%	6%
15	0	0.00%	21.98%	24.65%	677	109	0.97	0.71	0.59	0	1	2	1	9%	48%	35%	1%	12%	5%
16	0	0.00%	7.23%	13.73%	1,969	202	0.89	0.61	0.60	1	2	7	1	20%	58%	16%	53%	2%	5%
17	0	0.00%	9.02%	16.71%	5,797	382	0.82	0.50	0.47	6	2	11	2	4%	79%	10%	28%	1%	2%
18	0	0.00%	12.22%	14.87%	1,730	225	0.76	0.43	0.45	2	2	13	7	7%	70%	11%	48%	0%	10%
19	0	0.00%	4.37%	15.06%	1,894	236	0.79	0.43	0.33	0	2	7	1	3%	66%	18%	61%	1%	8%
20	0	0.00%	50.64%	22.15%	2,556	315	0.81	0.32	0.54	0	2	11	13	22%	42%	23%	11%	4%	15%
21	0	0.00%	15.56%	24.23%	261	103	0.64	0.31	0.28	0	2	5	5	38%	4%	42%	2%	5%	27%
22	0	0.00%	13.73%	21.59%	342	125	0.82	0.28	0.19	0	2	23	7	20%	42%	29%	49%	6%	9%
23	0	0.00%	16.90%	42.18%	239	80	0.85	0.47	0.43	0	1	6	6	53%	30%	28%	21%	0%	10%
24	0	0.00%	42.02%	37.76%	176	68	0.90	0.47	0.46	0	2	16	6	26%	36%	29%	46%	1%	18%
25	0	0.00%	7.96%	76.83%	3,680	364	0.67	0.35	0.40	1	2	10	3	7%	68%	16%	20%	0%	8%
26	0	0.00%	10.32%	73.35%	6,710	591	0.55	0.24	0.22	1	1	8	1	1%	88%	7%	86%	0%	1%
27	0	0.00%	7.07%	74.18%	280	70	0.95	0.73	0.71	0	1	6	2	9%	18%	35%	59%	0%	6%
28	0	0.00%	14.78%	23.18%	2,240	276	0.85	0.37	0.44	1	1	17	2	5%	90%	3%	26%	0%	5%

Overall numbers of county and city splits:

	In Plan S000C8042	
District lines and City and County Boundaries:	67	
Number of Counties	48	412
Counties with only one district	5	366
Districts with only one county	19	46
Counties split into more than one district	48	372
Counties with all population in a single district	51	100
Aggregate number of county splits	51	94
Aggregate number of splits with population		
Number of Cities		
Cities with only one district		
Cities split into more than one district		
Cities with all population in only one district		
Aggregate number of city splits		
Aggregate number of splits with population		

Plan S000C8042

Counties included in more than one district					
County	Dist.	Total Pop.	Pop%	Total Area	Area%
Broward	20	535,675	27.6%	888.0	67.9%
Broward	21	313,820	16.1%	71.1	5.4%
Broward	22	233,209	12.0%	97.7	7.5%
Broward	23	769,221	39.6%	238.9	18.3%
Broward	24	92,450	4.8%	12.6	1.0%
Collier	19	215,578	57.4%	639.5	24.6%
Collier	25	160,174	42.6%	1,965.6	75.5%
Columbia	2	51,337	73.7%	350.3	43.7%
Columbia	5	18,361	26.3%	451.0	56.3%
Duval	4	505,744	50.8%	454.9	49.5%
Duval	5	489,823	49.2%	463.6	50.5%
Hillsborough	14	592,149	40.6%	299.1	22.5%
Hillsborough	15	769,221	52.7%	676.6	50.8%
Hillsborough	16	98,392	6.7%	356.2	26.7%
Indian River	8	145,456	91.0%	609.1	98.7%
Indian River	18	14,332	9.0%	7.8	1.3%
Jefferson	2	4,410	30.4%	400.1	59.5%
Jefferson	5	10,100	69.6%	272.5	40.5%
Lake	6	35,396	9.2%	379.1	32.8%
Lake	11	304,385	79.3%	547.9	47.4%
Lake	28	44,175	11.5%	229.8	19.9%
Lee	17	207,179	27.2%	260.0	17.2%
Lee	19	553,643	72.8%	1,254.9	82.8%
Leon	2	145,318	49.7%	488.5	69.6%
Leon	5	146,880	50.3%	213.3	30.4%
Marion	2	39,930	10.6%	233.6	14.1%
Marion	3	154,737	41.2%	874.2	52.6%
Marion	11	181,241	48.2%	554.9	33.4%
Miami-Dade	24	676,771	25.1%	163.3	6.8%
Miami-Dade	25	569,428	21.1%	525.2	22.0%
Miami-Dade	26	686,347	25.4%	1,420.5	59.5%
Miami-Dade	27	769,221	28.5%	280.3	11.7%
Orange	7	262,969	18.4%	81.8	8.2%
Orange	8	17,153	1.2%	134.4	13.4%
Orange	9	380,565	26.6%	334.2	33.3%
Orange	10	769,221	53.8%	453.0	45.1%
Palm Beach	18	267,232	17.9%	281.3	11.8%
Palm Beach	20	233,546	15.7%	1,667.6	70.0%
Palm Beach	21	455,401	30.5%	189.7	8.0%
Palm Beach	22	536,012	35.9%	244.7	10.3%
Pinellas	12	12,815	1.3%	33.9	3.9%
Pinellas	13	769,221	80.2%	705.3	81.8%
Pinellas	14	177,071	18.5%	123.3	14.3%
Sarasota	16	271,119	62.5%	649.2	66.5%
Sarasota	17	162,887	37.5%	326.4	33.5%
St. Johns	4	173,125	63.3%	371.9	45.3%
St. Johns	6	100,300	36.7%	449.6	54.7%
Volusia	6	518,147	93.6%	1,370.0	95.6%
Volusia	7	35,396	6.4%	62.4	4.4%
Walton	1	47,648	63.3%	821.5	58.3%
Walton	2	27,657	36.7%	588.0	41.7%

Counties included in more than one district					
County	Dist.	Total Pop.	Pop%	Total Area	Area%

Counties included in more than one district					
County	Dist.	Total Pop.	Pop%	Total Area	Area%

Counties included in more than one district					
County	Dist.	Total Pop.	Pop%	Total Area	Area%

Functional Analysis - Summary

Plan S000C8042

Dist.	2020 Census			2020 General Election Registered Voters																
	VAP who are:		RV who are:			RV who are:		Black Voters who are:			Hisp. Voters who are:			DEM who are:		REP who are:		NPAOth who are:		
	Black	Hisp	DEM	REP	OTH	Black	Hisp	DEM	REP	NPAOth	DEM	REP	NPAOth	Black	Hisp	Black	Hisp	Black	Hisp	
5	43.73%	9.04%	54.34%	26.24%	19.43%	43.59%	4.83%	84.10%	2.75%	13.14%	44.56%	21.04%	34.20%	67.38%	3.96%	4.57%	3.87%	29.43%	8.50%	
9	12.81%	50.24%	41.80%	23.16%	35.03%	9.28%	44.52%	71.84%	4.02%	24.11%	46.58%	13.81%	39.60%	15.95%	49.60%	1.61%	26.55%	6.39%	50.32%	
10	28.33%	23.38%	45.07%	26.06%	28.86%	24.37%	16.10%	77.81%	3.25%	18.92%	45.58%	15.94%	38.45%	42.08%	16.28%	3.04%	9.85%	15.98%	21.45%	
20	50.94%	22.15%	61.23%	13.99%	24.78%	46.67%	14.84%	81.44%	2.55%	16.00%	46.41%	17.36%	36.20%	62.07%	11.25%	8.50%	18.42%	30.12%	21.67%	
24	42.02%	37.76%	60.07%	12.45%	27.48%	43.75%	26.79%	82.51%	2.43%	15.05%	42.80%	20.02%	37.16%	60.09%	19.09%	8.53%	43.09%	23.96%	36.22%	
25	7.96%	74.85%	31.43%	36.54%	32.03%	6.97%	64.95%	79.64%	3.94%	16.25%	29.23%	35.98%	34.77%	17.66%	59.60%	0.75%	63.10%	3.54%	69.57%	
26	10.32%	73.27%	33.92%	32.58%	33.51%	8.67%	63.25%	77.59%	3.48%	18.90%	28.78%	35.47%	35.74%	19.84%	54.23%	0.93%	69.60%	4.89%	68.18%	
27	7.07%	74.18%	34.57%	33.39%	32.04%	6.14%	63.25%	78.61%	3.67%	17.61%	28.03%	38.96%	33.00%	13.97%	50.91%	0.67%	73.27%	3.38%	64.68%	

Plan S000C8042

Dist.	2020 Census		Average Primary Election Turnout				Average General Election Turnout											General Election Performance in Statewide Elections 2012-2020										
	VAP who are:		DEM who are:		REP who are:		Voters who are:			DEM who are:		REP who are:		NPAOth who are:		Black Voters who are:			Hisp. Voters who are:			Avg. Perf.		Wins		Margins		
	Black	Hisp	Black	Hisp	Black	Hisp	DEM	REP	NPAOth	Black	Hisp	Black	Hisp	Black	Hisp	DEM	REP	NPAOth	DEM	REP	NPAOth	DEM	REP	DEM	REP	MAX	MIN	AVG
5	43.73%	9.04%	66.22%	1.13%	2.81%	1.51%	58.13%	28.64%	13.23%	65.88%	2.59%	3.31%	2.83%	25.94%	6.77%	89.70%	2.22%	8.05%	45.52%	25.69%	28.14%	58.5%	40.1%	14	0	D +32.4%	D +7.1%	D +18.8%
9	12.81%	50.24%	18.82%	35.24%	1.05%	14.10%	43.37%	29.02%	27.61%	17.51%	43.60%	1.32%	19.42%	6.11%	41.61%	78.50%	3.95%	17.46%	52.57%	15.53%	31.90%	57.3%	40.9%	12	2	D +34.4%	D +0.9%	D +16.7%
10	28.33%	23.38%	48.65%	7.79%	1.94%	4.80%	45.72%	32.02%	22.26%	44.50%	12.76%	2.18%	7.05%	13.88%	16.65%	84.23%	2.88%	12.87%	49.38%	19.11%	31.43%	57.5%	40.9%	12	2	D +29.1%	R +1.5%	D +17.2%
20	30.04%	22.15%	64.04%	4.47%	6.25%	9.69%	66.46%	14.61%	18.92%	62.17%	8.59%	6.94%	14.36%	28.30%	18.16%	86.61%	2.12%	11.23%	50.45%	18.81%	30.57%	78.1%	21.0%	14	0	D +65.1%	D +50.7%	D +57.3%
24	42.02%	37.76%	67.48%	10.63%	7.00%	47.13%	66.57%	12.13%	21.30%	62.81%	15.65%	7.51%	42.22%	23.92%	34.11%	87.45%	1.90%	10.62%	45.30%	22.77%	31.86%	80.3%	18.8%	14	0	D +68%	D +49.4%	D +61.6%
25	7.96%	75.85%	26.60%	42.55%	0.43%	61.13%	32.92%	41.38%	25.70%	20.79%	53.26%	0.57%	61.19%	3.39%	66.94%	85.82%	2.98%	11.07%	29.10%	42.27%	28.61%	45.0%	53.8%	3	11	R +20.4%	D +2.6%	R +8.6%
26	10.32%	73.45%	22.58%	36.25%	0.57%	65.42%	35.69%	36.75%	27.56%	21.18%	47.57%	0.77%	66.17%	4.67%	64.29%	82.77%	3.10%	14.10%	28.65%	41.33%	30.00%	50.7%	48.0%	9	5	D +15.7%	R +2.2%	D +3%
27	7.07%	74.58%	17.87%	36.73%	0.39%	75.66%	35.72%	38.10%	26.18%	15.24%	45.38%	0.52%	72.02%	3.19%	63.12%	83.83%	3.09%	12.93%	26.85%	45.71%	27.44%	50.6%	48.3%	9	5	D +17.4%	R +0.6%	D +2.7%

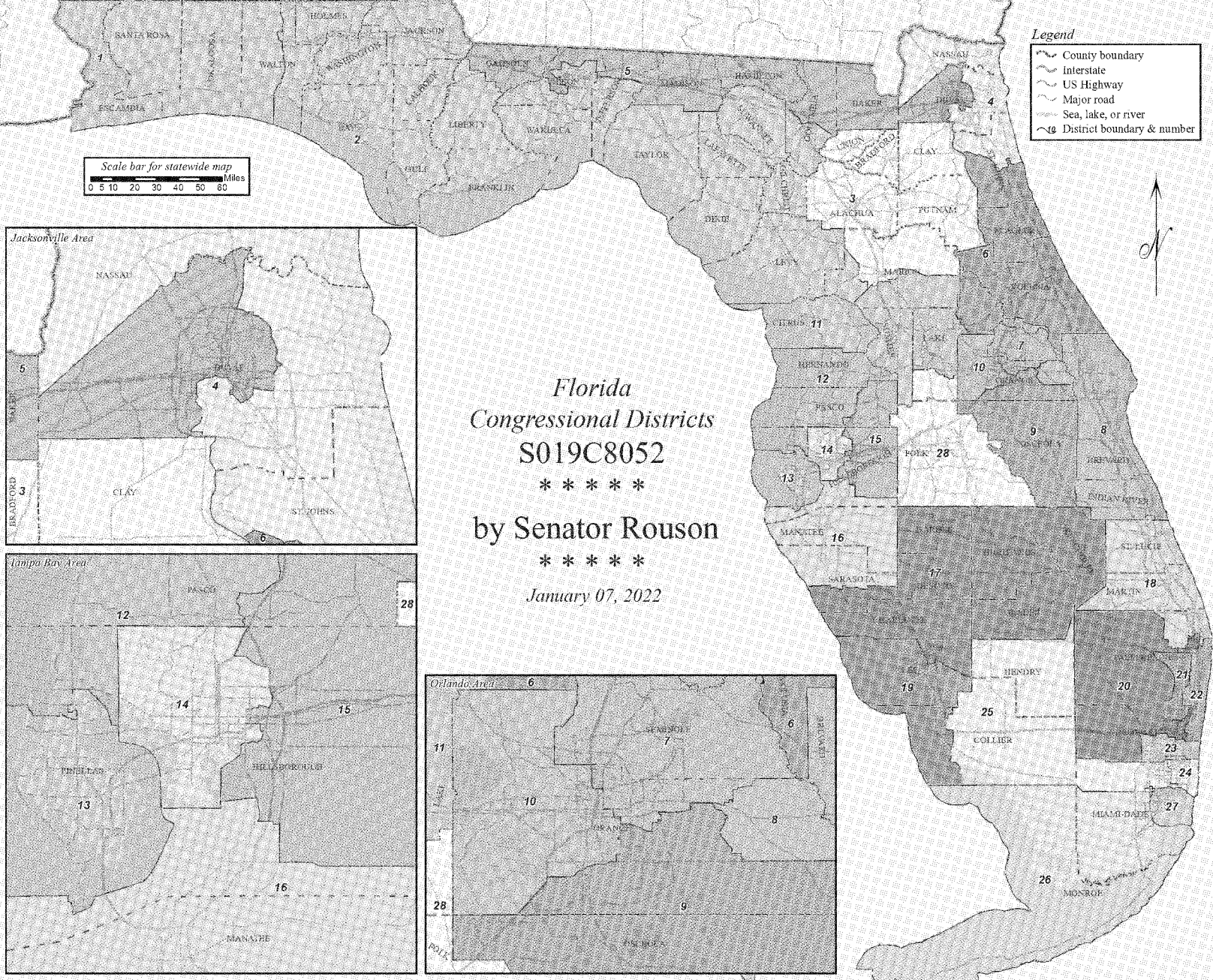
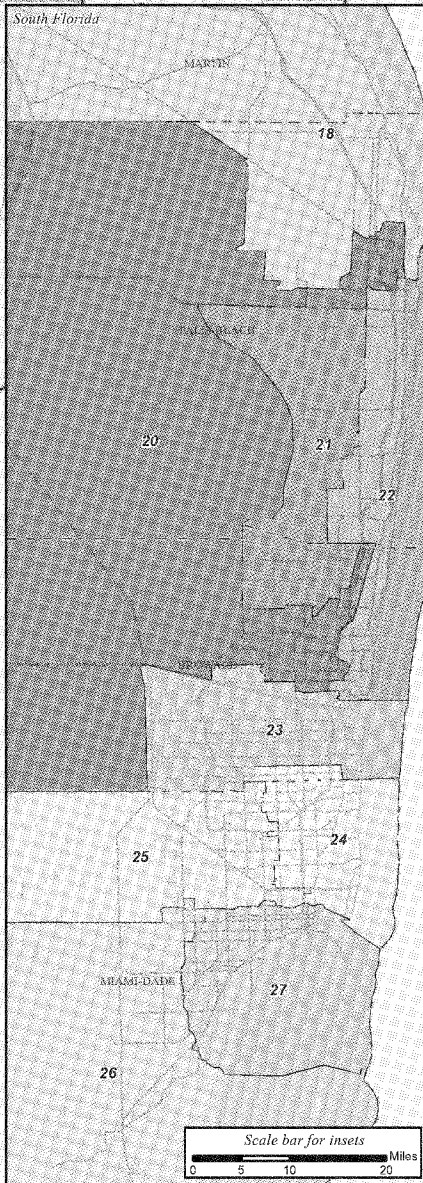
Functional Analysis - Returns

		5	9	10	20	24	25	26	27	
Plan S000C8042		BVAP	41.73%	12.81%	28.33%	50.08%	42.09%	7.96%	10.32%	7.07%
Primary Elections		HVAP	9.04%	50.24%	23.38%	22.15%	37.76%	66.33%	73.35%	74.13%
2018	Governor (REP)	R_Baldauf	0.70%	0.84%	0.71%	1.36%	1.92%	1.93%	1.83%	1.50%
		R_DeSantis	52.44%	52.75%	52.09%	62.76%	66.52%	65.93%	67.74%	67.69%
		R_Devine	1.13%	1.98%	1.43%	2.20%	3.24%	2.92%	3.34%	3.09%
		R_Langford	1.13%	1.44%	1.65%	1.86%	1.97%	1.41%	1.72%	1.53%
		R_Mercadante	0.42%	1.28%	0.76%	1.51%	2.13%	1.93%	2.06%	2.14%
		R_Nathan	0.71%	1.00%	0.82%	1.54%	2.72%	1.13%	1.42%	1.39%
		R_Putnam	41.63%	37.93%	40.26%	25.36%	17.05%	21.84%	18.17%	18.84%
	R_White	1.62%	2.61%	2.11%	2.89%	3.92%	2.63%	3.54%	3.46%	
	Governor (DEM)	D_Gillum	58.39%	29.99%	45.49%	52.96%	50.35%	32.88%	31.83%	28.95%
		D_Graham	22.26%	29.75%	28.40%	13.34%	11.17%	19.31%	21.15%	22.65%
		D_Greene	5.72%	13.96%	8.69%	10.39%	9.34%	9.66%	10.62%	7.94%
		D_King	1.43%	4.29%	3.76%	0.94%	0.75%	2.33%	2.11%	1.54%
		D_Levine	10.71%	19.18%	12.46%	21.58%	27.53%	32.70%	32.23%	37.17%
		D_Lundmark	0.49%	1.12%	0.44%	0.30%	0.38%	1.37%	0.91%	0.78%
	D_Wetherbee	0.83%	1.64%	0.66%	0.38%	0.32%	1.27%	0.97%	0.68%	
	Attorney General (REP)	R_Moody	57.78%	54.44%	55.46%	55.57%	53.16%	52.08%	54.82%	54.79%
		R_White	42.22%	45.50%	44.57%	44.27%	46.64%	47.88%	45.11%	45.20%
	Attorney General (DEM)	D_Shaw	78.66%	61.11%	74.44%	81.44%	82.10%	67.77%	69.58%	74.09%
		D_Torrens	21.31%	38.88%	25.57%	18.56%	17.89%	32.10%	30.43%	25.91%
	Agriculture Commissioner (REP)	R_Caldwell	35.67%	36.42%	34.83%	43.50%	39.73%	42.29%	42.07%	40.18%
		R_Grimsley	21.36%	31.97%	31.49%	25.91%	31.44%	29.71%	31.57%	32.70%
R_McCalister		8.68%	16.25%	15.43%	21.17%	17.11%	12.78%	16.62%	16.76%	
Agriculture Commissioner (DEM)	R_Troutman	34.12%	15.22%	18.23%	9.04%	11.06%	15.05%	9.61%	10.37%	
	D_Fried	60.09%	55.10%	55.25%	63.92%	59.04%	52.18%	53.25%	59.89%	
	D_Porter	20.04%	18.57%	17.46%	16.10%	17.36%	20.02%	20.45%	15.13%	
US Senate (REP)	D_Walker	19.86%	26.32%	27.30%	19.96%	23.60%	27.59%	26.21%	24.88%	
	R_De La Fuente	10.20%	10.06%	11.29%	14.88%	15.74%	9.81%	12.28%	12.63%	
US Senate (DEM)	R_Scott	89.71%	89.89%	88.72%	84.91%	84.06%	90.09%	87.66%	87.32%	
	R_Beruff	22.31%	17.11%	17.64%	14.64%	8.73%	8.85%	6.43%	5.58%	
US Senate (REP)	R_Rivera	3.70%	3.21%	2.45%	5.03%	3.26%	2.20%	2.94%	1.88%	
	R_Rubio	68.00%	71.92%	74.53%	70.56%	80.12%	85.24%	85.70%	88.87%	
	R_Young	5.81%	7.56%	5.31%	9.37%	7.44%	3.59%	4.86%	3.46%	
US Senate (DEM)	D_De La Fuente	4.12%	14.95%	3.93%	3.17%	5.51%	19.30%	13.76%	12.16%	
	D_Grayson	17.53%	45.27%	40.72%	9.95%	10.82%	11.17%	11.16%	11.19%	
	D_Keith	15.18%	9.79%	12.71%	14.56%	13.82%	13.73%	15.63%	17.86%	
	D_Luster	12.08%	1.26%	2.28%	2.23%	2.68%	2.02%	1.68%	1.54%	
D_Murphy	50.94%	28.53%	40.28%	69.89%	66.91%	53.19%	57.51%	56.90%		
Governor (REP)	R_Adeshina	1.29%	1.69%	1.67%	2.66%	2.97%	1.46%	1.77%	1.80%	
	R_Cuevas-Neunder	8.09%	12.04%	9.60%	14.56%	16.32%	10.61%	15.19%	13.26%	
	R_Scott	90.47%	86.09%	88.64%	82.42%	80.36%	87.73%	82.95%	84.83%	
Governor (DEM)	D_Crist	74.34%	76.41%	78.84%	82.85%	84.35%	76.74%	78.42%	73.98%	
	D_Rich	25.58%	23.44%	21.17%	17.09%	15.61%	22.84%	21.48%	25.89%	
Attorney General (DEM)	D_Sheldon	60.86%	60.66%	49.68%	39.26%	46.77%	58.73%	61.40%	65.55%	
	D_Thurston	39.17%	39.26%	50.37%	60.66%	53.21%	40.91%	38.48%	34.37%	
2012	US Senate (REP)	R_Mack	57.58%	49.35%	58.32%	65.26%	71.78%	73.46%	73.64%	77.15%
		R_McCalister	18.65%	11.93%	10.93%	13.11%	6.85%	8.01%	7.36%	5.18%
		R_Stuart	5.92%	6.58%	4.88%	7.25%	13.13%	12.37%	13.26%	12.99%
		R_Weldon	17.45%	31.96%	25.74%	13.85%	8.00%	5.92%	5.67%	4.46%
	US Senate (DEM)	D_Burkett	22.03%	19.38%	13.66%	14.24%	14.02%	21.21%	18.40%	14.76%
D_Nelson		77.91%	80.61%	86.30%	85.70%	85.93%	78.58%	81.49%	85.11%	

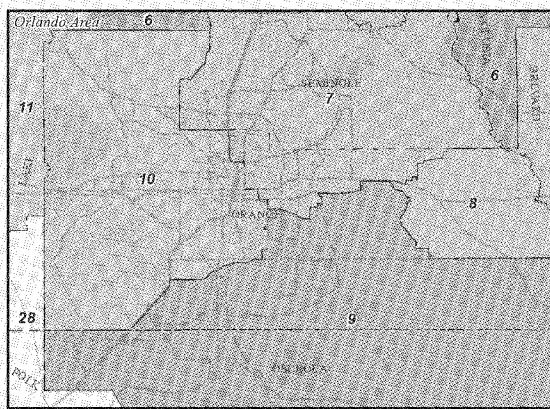
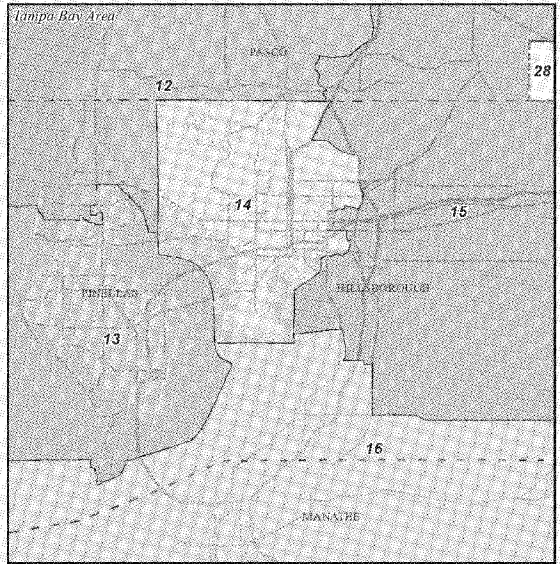
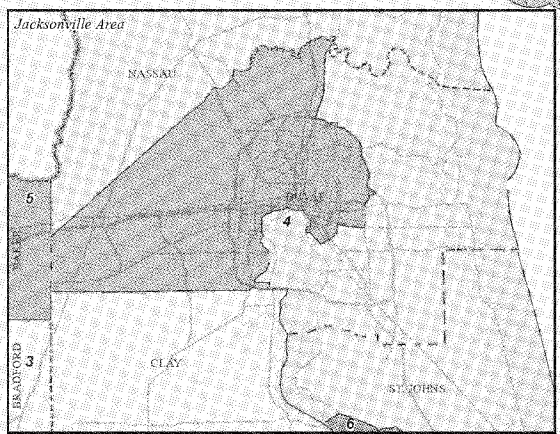
Functional Analysis - Returns


			5	9	10	20	24	25	26	27	
Plan S000C8042			BVAP	43.73%	12.81%	28.33%	59.04%	42.02%	7.96%	10.32%	7.07%
General Elections			HVAP	9.04%	50.24%	23.38%	22.15%	37.76%	76.83%	73.35%	74.13%
2020	President	D_Biden	60.23%	58.79%	61.66%	75.53%	74.41%	40.98%	46.43%	49.44%	
		R_Trump	38.62%	40.22%	37.34%	23.88%	25.06%	58.48%	52.99%	50.01%	
2018	Governor	D_Gillum	62.51%	61.81%	62.29%	79.65%	81.56%	46.17%	52.49%	53.18%	
		R_DeSantis	36.60%	36.87%	36.70%	19.73%	17.74%	52.44%	46.31%	45.75%	
	Attorney General	D_Shaw	59.25%	58.41%	58.50%	78.13%	80.14%	44.45%	50.86%	51.99%	
		R_Moody	39.21%	39.61%	39.86%	20.54%	18.30%	53.53%	46.94%	46.10%	
	Chief Financial Officer	D_Ring	60.38%	60.81%	60.33%	79.52%	81.61%	45.82%	51.93%	52.59%	
		R_Patronis	39.62%	39.19%	39.67%	20.46%	18.38%	54.17%	48.07%	47.41%	
Agriculture Commissioner	D_Fried	61.38%	62.27%	62.23%	79.77%	82.11%	46.93%	53.44%	54.63%		
	R_Caldwell	38.63%	37.73%	37.77%	20.22%	17.88%	53.06%	46.56%	45.38%		
US Senate	D_Nelson	62.25%	60.52%	62.11%	79.66%	81.49%	46.47%	53.46%	54.47%		
	R_Scott	37.75%	39.48%	37.89%	20.33%	18.51%	53.52%	46.54%	45.52%		
2016	President	D_Clinton	58.51%	61.95%	60.09%	77.52%	81.10%	52.56%	56.46%	57.42%	
		R_Trump	38.61%	34.53%	36.37%	20.71%	17.23%	45.16%	40.81%	40.05%	
	US Senate	D_Murphy	52.82%	54.92%	54.84%	75.52%	76.02%	42.42%	47.69%	47.78%	
R_Rubio		43.90%	41.03%	41.35%	22.53%	21.88%	55.35%	49.92%	50.17%		
2014	Governor	D_Crist	56.54%	52.80%	54.65%	79.64%	82.25%	43.00%	51.20%	50.00%	
		R_Scott	39.85%	42.13%	40.77%	18.20%	16.17%	54.28%	45.89%	47.55%	
	Attorney General	D_Sheldon	53.20%	49.01%	51.79%	75.88%	79.86%	38.72%	45.82%	46.03%	
		R_Bondi	44.31%	48.13%	45.30%	22.66%	18.70%	58.94%	51.75%	51.96%	
	Chief Financial Officer	D_Rankin	53.57%	48.88%	49.22%	75.36%	79.06%	40.24%	45.88%	43.49%	
		R_Atwater	46.43%	51.12%	50.78%	24.62%	20.94%	59.75%	54.12%	56.53%	
Agriculture Commissioner	D_Hamilton	55.57%	47.75%	49.27%	76.85%	79.82%	39.79%	46.04%	44.31%		
	R_Putnam	44.41%	52.25%	50.73%	23.15%	20.18%	60.19%	53.95%	55.69%		
2012	President	D_Obama	61.03%	61.43%	58.97%	80.43%	82.82%	51.07%	54.83%	52.22%	
		R_Romney	38.14%	37.76%	40.24%	19.14%	16.82%	48.44%	44.61%	47.27%	
	US Senate	D_Nelson	65.00%	65.98%	63.62%	81.94%	83.49%	52.79%	56.33%	54.47%	
R_Mack		32.61%	31.57%	34.51%	16.83%	15.47%	45.07%	42.03%	44.15%		

Exhibit G - Part 3



Florida
Congressional Districts
S019C8052
 * * * * *
by Senator Rouson
 * * * * *
January 07, 2022




 Map produced by professional staff
 Florida Senate Committee on Reapportionment
 404 S. Monroe St., Tallahassee, FL 32399-1100
 Office: 2000 The Capitol, Phone: (850) 437-5855;
 Website: <https://www.floridaredistricting.gov>

Plan S019C8052

Dist.	Deviation		Voting Age Population:		Area (sq.mi.)	Perim. (mi.)	Convex Hull	Polsby-Popper Ratio	Reock	Counties		Cities		Political and Geographic Boundaries:					
	Total	%	Black	Hisp.						Whole	Parts	Whole	Parts	City	County	Road	Water	Rail	Non-Pol/Geo
1	0	0.00%	13.55%	6.69%	4,416	329	0.87	0.51	0.54	3	1	15	2	2%	81%	14%	55%	0%	2%
2	0	0.00%	13.32%	6.21%	15,879	884	0.71	0.26	0.28	15	5	55	4	4%	76%	19%	47%	0%	4%
3	0	0.00%	16.08%	10.45%	3,864	308	0.88	0.51	0.70	5	1	28	0	17%	74%	15%	24%	1%	8%
4	0	0.00%	10.79%	9.27%	1,553	332	0.66	0.18	0.34	1	2	6	2	24%	73%	17%	54%	2%	3%
5	0	0.00%	43.73%	9.04%	3,753	635	0.65	0.12	0.12	4	4	16	3	12%	74%	22%	13%	0%	2%
6	0	0.00%	9.70%	11.04%	2,770	332	0.73	0.31	0.33	1	3	20	4	6%	74%	7%	54%	2%	10%
7	0	0.00%	12.32%	25.39%	490	113	0.88	0.49	0.66	1	2	7	6	6%	43%	19%	32%	0%	34%
8	0	0.00%	9.58%	10.30%	2,301	272	0.75	0.39	0.32	1	2	21	0	0%	85%	6%	46%	0%	9%
9	0	0.00%	12.81%	50.24%	1,840	253	0.86	0.36	0.49	1	1	2	2	2%	76%	17%	31%	0%	8%
10	0	0.00%	28.33%	23.38%	453	103	0.89	0.54	0.51	0	1	8	5	14%	68%	31%	23%	0%	2%
11	0	0.00%	8.61%	10.59%	2,643	349	0.68	0.27	0.34	2	2	19	3	12%	70%	19%	38%	1%	7%
12	0	0.00%	4.87%	11.57%	1,628	224	0.80	0.41	0.46	1	2	5	3	9%	73%	8%	46%	0%	8%
13	0	0.00%	11.45%	9.76%	625	112	0.91	0.63	0.68	0	1	20	3	40%	69%	5%	88%	0%	2%
14	0	0.00%	18.04%	30.22%	330	88	0.87	0.54	0.55	0	1	0	2	53%	49%	13%	44%	0%	9%
15	-1	0.00%	15.82%	23.27%	985	172	0.88	0.42	0.41	0	2	5	2	13%	44%	35%	12%	2%	16%
16	0	0.00%	7.23%	13.73%	1,969	202	0.89	0.61	0.60	1	2	7	1	20%	58%	16%	53%	2%	5%
17	0	0.00%	9.02%	16.71%	5,797	382	0.82	0.50	0.47	6	2	11	2	4%	79%	10%	28%	1%	2%
18	0	0.00%	12.22%	14.87%	1,730	225	0.76	0.43	0.45	2	2	13	7	7%	70%	11%	48%	0%	10%
19	0	0.00%	4.37%	15.06%	1,894	236	0.79	0.43	0.33	0	2	7	1	3%	66%	18%	61%	1%	8%
20	0	0.00%	50.04%	22.15%	2,556	315	0.81	0.32	0.54	0	2	11	13	22%	42%	23%	11%	4%	15%
21	0	0.00%	15.56%	24.23%	261	103	0.64	0.31	0.28	0	2	5	5	38%	4%	42%	2%	5%	27%
22	0	0.00%	13.73%	21.59%	342	125	0.82	0.28	0.19	0	2	23	7	20%	42%	29%	49%	6%	9%
23	0	0.00%	16.90%	42.18%	239	80	0.85	0.47	0.43	0	1	6	6	53%	30%	28%	21%	0%	10%
24	0	0.00%	42.02%	37.76%	176	68	0.90	0.47	0.46	0	2	16	6	26%	36%	29%	46%	1%	18%
25	0	0.00%	7.96%	75.83%	3,680	364	0.67	0.35	0.40	1	2	10	3	7%	68%	16%	20%	0%	8%
26	0	0.00%	10.32%	73.35%	6,710	591	0.55	0.24	0.22	1	1	8	1	1%	88%	7%	86%	0%	1%
27	0	0.00%	7.07%	74.18%	280	70	0.95	0.73	0.71	0	1	6	2	9%	18%	35%	59%	0%	6%
28	0	0.00%	14.78%	23.18%	2,240	276	0.85	0.37	0.44	1	1	17	2	5%	90%	3%	26%	0%	5%

Overall numbers of county and city splits:

	In Plan S019C8052	
Number of Counties	67	412
Counties with only one district	47	367
Districts with only one county	5	45
Counties split into more than one district	20	374
Counties with all population in a single district	47	97
Aggregate number of county splits	52	90
Aggregate number of splits with population	52	
Number of Cities		
Cities with only one district		
Cities split into more than one district		
Cities with all population in only one district		
Aggregate number of city splits		
Aggregate number of splits with population		

District lines and City and County Boundaries

Plan S019C8052

Counties included in more than one district					
County	Dist.	Total Pop.	Pop%	Total Area	Area%
Broward	20	535,675	27.6%	888.0	67.9%
Broward	21	313,820	16.1%	71.1	5.4%
Broward	22	233,209	12.0%	97.7	7.5%
Broward	23	769,221	39.6%	238.9	18.3%
Broward	24	92,450	4.8%	12.6	1.0%
Collier	19	215,578	57.4%	639.5	24.6%
Collier	25	160,174	42.6%	1,965.6	75.5%
Columbia	2	51,337	73.7%	350.3	43.7%
Columbia	5	18,361	26.3%	451.0	56.3%
Duval	4	505,744	50.8%	454.9	49.5%
Duval	5	489,823	49.2%	463.6	50.5%
Hillsborough	14	769,221	52.7%	329.9	24.8%
Hillsborough	15	592,149	40.6%	645.8	48.5%
Hillsborough	16	98,392	6.7%	356.2	26.7%
Indian River	8	145,456	91.0%	609.1	98.7%
Indian River	18	14,332	9.0%	7.8	1.3%
Jefferson	2	4,410	30.4%	400.1	59.5%
Jefferson	5	10,100	69.6%	272.5	40.5%
Lake	6	35,396	9.2%	379.1	32.8%
Lake	11	304,385	79.3%	547.9	47.4%
Lake	28	44,175	11.5%	229.8	19.9%
Lee	17	207,179	27.2%	260.0	17.2%
Lee	19	553,643	72.8%	1,254.9	82.8%
Leon	2	145,318	49.7%	488.5	69.6%
Leon	5	146,880	50.3%	213.3	30.4%
Marion	2	39,930	10.6%	233.6	14.1%
Marion	3	154,737	41.2%	874.2	52.6%
Marion	11	181,241	48.2%	554.9	33.4%
Miami-Dade	24	676,771	25.1%	163.3	6.8%
Miami-Dade	25	569,428	21.1%	525.2	22.0%
Miami-Dade	26	686,347	25.4%	1,420.5	59.5%
Miami-Dade	27	769,221	28.5%	280.3	11.7%
Orange	7	262,969	18.4%	81.8	8.2%
Orange	8	17,153	1.2%	134.4	13.4%
Orange	9	380,565	26.6%	334.2	33.3%
Orange	10	769,221	53.8%	453.0	45.1%
Palm Beach	18	267,232	17.9%	281.3	11.8%
Palm Beach	20	233,546	15.7%	1,667.6	70.0%
Palm Beach	21	455,401	30.5%	189.7	8.0%
Palm Beach	22	536,012	35.9%	244.7	10.3%
Pasco	12	384,820	68.5%	675.5	66.6%
Pasco	15	177,071	31.5%	339.2	33.4%
Pinellas	12	189,886	19.8%	237.5	27.5%
Pinellas	13	769,221	80.2%	625.1	72.5%
Sarasota	16	271,119	62.5%	649.2	66.5%
Sarasota	17	162,887	37.5%	326.4	33.5%
St. Johns	4	173,125	63.3%	371.9	45.3%
St. Johns	6	100,300	36.7%	449.6	54.7%
Volusia	6	518,147	93.6%	1,370.0	95.6%
Volusia	7	35,396	6.4%	62.4	4.4%
Walton	1	47,648	63.3%	821.5	58.3%
Walton	2	27,657	36.7%	588.0	41.7%

Counties included in more than one district					
County	Dist.	Total Pop.	Pop%	Total Area	Area%

Counties included in more than one district					
County	Dist.	Total Pop.	Pop%	Total Area	Area%

Counties included in more than one district					
County	Dist.	Total Pop.	Pop%	Total Area	Area%

Plan S019C8052

Cities included in more than one district						Cities included in more than one district						Cities included in more than one district						Cities included in more than one district					
City	Dist	Total Pop	Pop%	Total Area	Area%	City	Dist	Total Pop	Pop%	Total Area	Area%	City	Dist	Total Pop	Pop%	Total Area	Area%	City	Dist	Total Pop	Pop%	Total Area	Area%
Belle Isle	9	216	3.1%	0.2	3.7%	Oldsmar	12	14,887	99.9%	10.1	100.0%												
Belle Isle	10	6,816	96.9%	5.0	96.3%	Oldsmar	13	11	0.1%	0.0	0.0%												
Clearwater	12	1,498	1.3%	0.2	0.5%	Opa-locka	24	9,537	57.9%	1.5	34.0%												
Clearwater	13	115,794	98.7%	35.7	99.5%	Opa-locka	25	6,926	42.1%	3.0	66.0%												
Clermont	11	43,021	100.0%	17.4	91.1%	Orlando	7	35,474	11.5%	9.0	7.6%												
Clermont	28	0	0.0%	1.7	8.9%	Orlando	9	86,183	28.0%	63.9	53.7%												
Cutler Bay	26	0	0.0%	0.0	0.2%	Orlando	10	185,916	60.5%	46.0	38.7%												
Cutler Bay	27	45,425	100.0%	10.3	99.8%	Palm Beach	18	2,634	28.5%	2.7	34.4%												
DeBary	6	9,468	42.5%	8.0	36.7%	Palm Beach	22	6,611	71.5%	5.1	65.6%												
DeBary	7	12,792	57.5%	13.8	63.4%	Palm Beach Gardens	18	59,182	100.0%	59.3	99.9%												
Deerfield Beach	20	29,350	33.8%	4.8	29.5%	Palm Beach Gardens	20	0	0.0%	0.1	0.1%												
Deerfield Beach	21	41,698	48.0%	8.5	52.6%	Pembroke Pines	23	170,725	99.7%	34.7	99.9%												
Deerfield Beach	22	15,811	18.2%	2.9	18.0%	Pembroke Pines	24	453	0.3%	0.0	0.1%												
DeFuniak Springs	1	860	14.5%	3.7	25.9%	Plantation	20	41,374	45.1%	9.0	40.9%												
DeFuniak Springs	2	5,059	85.5%	10.6	74.1%	Plantation	23	50,376	54.9%	13.0	59.1%												
Delray Beach	21	0	0.0%	0.0	0.0%	Pompano Beach	20	53,918	48.1%	11.3	45.8%												
Delray Beach	22	66,846	100.0%	16.5	100.0%	Pompano Beach	21	3,327	3.0%	2.9	11.6%												
Deltona	6	76,307	81.4%	33.7	82.4%	Pompano Beach	22	54,801	48.9%	10.5	42.6%												
Deltona	7	17,385	18.6%	7.2	17.6%	Riviera Beach	18	9,951	26.5%	3.1	32.5%												
Dunedin	12	36,068	100.0%	22.9	100.0%	Riviera Beach	20	27,653	73.5%	6.5	67.5%												
Dunedin	13	0	0.0%	0.0	0.0%	Royal Palm Beach	18	16,407	42.1%	5.0	42.9%												
Eatonville	7	1,202	51.2%	0.5	41.7%	Royal Palm Beach	20	17,861	45.9%	5.6	48.1%												
Eatonville	10	1,147	48.8%	0.7	58.3%	Royal Palm Beach	21	4,664	12.0%	1.1	8.9%												
Fort Lauderdale	20	58,993	32.3%	13.0	35.7%	St. Augustine	4	2,447	17.1%	1.6	12.1%												
Fort Lauderdale	22	102,735	56.2%	18.3	50.4%	St. Augustine	6	11,882	82.9%	11.3	87.9%												
Fort Lauderdale	23	21,032	11.5%	5.0	13.9%	Sunrise	20	85,270	87.6%	14.1	77.8%												
Fort Myers	17	32,184	37.3%	19.8	40.4%	Sunrise	23	12,065	12.4%	4.0	22.2%												
Fort Myers	19	54,211	62.8%	29.2	59.6%	Tallahassee	2	82,107	41.9%	69.0	66.5%												
Freeport	1	5,587	95.3%	15.3	80.4%	Tallahassee	5	114,062	58.1%	34.8	33.5%												
Freeport	2	274	4.7%	3.7	19.6%	Tampa	14	339,835	88.3%	154.6	87.9%												
Groveland	11	16,026	86.6%	24.3	93.0%	Tampa	15	45,124	11.7%	21.3	12.1%												
Groveland	28	2,479	13.4%	1.8	7.1%	Temple Terrace	14	26,690	100.0%	7.6	99.0%												
Hallandale Beach	23	28,737	69.7%	3.0	65.9%	Temple Terrace	15	0	0.0%	0.1	1.0%												
Hallandale Beach	24	12,480	30.3%	1.6	34.1%	Umatilla	6	1,415	38.4%	1.9	45.5%												
Jacksonville	4	461,184	48.6%	412.9	47.2%	Umatilla	11	2,270	61.6%	2.3	54.5%												
Jacksonville	5	488,427	51.4%	461.6	52.8%	Venice	16	12,178	47.8%	10.9	61.9%												
Lake City	2	6,672	54.1%	6.1	49.9%	Venice	17	13,285	52.2%	6.7	38.1%												
Lake City	5	5,657	45.9%	6.1	50.1%	West Palm Beach	18	18,256	15.6%	33.2	57.2%												
Lake Park	18	1,245	13.8%	0.4	17.1%	West Palm Beach	20	63,092	53.7%	16.2	27.9%												
Lake Park	20	7,802	86.2%	2.0	82.9%	West Palm Beach	22	36,067	30.7%	8.6	14.9%												
Maitland	7	13,664	69.9%	4.8	73.6%	Winter Park	7	28,902	97.0%	10.0	96.6%												
Maitland	10	5,879	30.1%	1.7	26.4%	Winter Park	10	893	3.0%	0.4	3.4%												
Margate	20	17,409	29.7%	2.5	27.6%																		
Margate	21	41,303	70.4%	6.6	72.4%																		
Miami	24	98,349	22.2%	15.0	26.7%																		
Miami	25	54,725	12.4%	4.8	8.5%																		
Miami	27	289,167	65.4%	36.3	64.8%																		
Miami Gardens	24	90,649	81.2%	15.2	79.8%																		
Miami Gardens	25	20,991	18.8%	3.8	20.2%																		
Miramar	23	76,594	56.9%	24.0	77.2%																		
Miramar	24	58,127	43.2%	7.1	22.8%																		
North Palm Beach	18	13,162	100.0%	5.3	99.5%																		
North Palm Beach	20	0	0.0%	0.0	0.6%																		
Oakland Park	20	15,037	34.0%	3.7	44.6%																		
Oakland Park	22	29,192	66.0%	4.5	55.4%																		

Functional Analysis - Summary

Plan S019C8052

Dist.	2020 Census			2020 General Election Registered Voters																
	VAP who are:		RV who are:			RV who are:		Black Voters who are:			Hisp. Voters who are:			DEM who are:		REP who are:		NPAOth who are:		
	Black	Hisp	DEM	REP	OTH	Black	Hisp	DEM	REP	NPAOth	DEM	REP	NPAOth	Black	Hisp	Black	Hisp	Black	Hisp	
5	43.73%	9.04%	54.34%	26.24%	19.43%	43.59%	4.83%	84.10%	2.75%	13.14%	44.56%	21.04%	34.20%	67.38%	3.96%	4.57%	3.87%	29.43%	8.50%	
9	12.81%	50.24%	41.80%	23.16%	35.03%	9.28%	44.52%	71.84%	4.02%	24.11%	46.58%	13.81%	39.60%	15.95%	49.60%	1.61%	26.55%	6.39%	50.32%	
10	28.33%	23.38%	45.07%	26.06%	28.86%	24.37%	16.10%	77.81%	3.25%	18.92%	45.58%	15.94%	38.45%	42.08%	16.28%	3.04%	9.85%	15.98%	21.45%	
20	50.94%	22.15%	61.23%	13.99%	24.78%	46.67%	14.84%	81.44%	2.55%	16.00%	46.41%	17.36%	36.20%	62.07%	11.25%	8.50%	18.42%	30.12%	21.67%	
24	42.02%	37.76%	60.07%	12.45%	27.48%	43.75%	26.79%	82.51%	2.43%	15.05%	42.80%	20.02%	37.16%	60.09%	19.09%	8.53%	43.09%	23.96%	36.22%	
25	7.96%	74.85%	31.43%	36.54%	32.03%	6.97%	64.95%	79.64%	3.94%	16.25%	29.23%	35.98%	34.77%	17.66%	59.60%	0.75%	63.10%	3.54%	69.57%	
26	10.32%	73.27%	33.92%	32.58%	33.51%	8.67%	63.25%	77.59%	3.48%	18.90%	28.78%	35.47%	35.74%	19.84%	54.23%	0.93%	69.60%	4.89%	68.18%	
27	7.07%	74.18%	34.57%	33.39%	32.04%	6.14%	63.25%	78.61%	3.67%	17.61%	28.03%	38.96%	33.00%	13.97%	50.91%	0.67%	73.27%	3.38%	64.68%	

Plan S019C8052

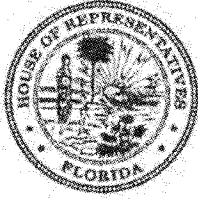
Dist.	2020 Census		Average Primary Election Turnout				Average General Election Turnout									General Election Performance in Statewide Elections 2012-2020												
	VAP who are:		DEM who are:		REP who are:		Voters who are:			DEM who are:		REP who are:		NPAOth who are:		Black Voters who are:			Hisp. Voters who are:			Avg. Perf.		Wins		Margins		
	Black	Hisp	Black	Hisp	Black	Hisp	DEM	REP	NPAOth	Black	Hisp	Black	Hisp	Black	Hisp	DEM	REP	NPAOth	DEM	REP	NPAOth	DEM	REP	DEM	REP	MAX	MIN	AVG
5	43.73%	9.04%	66.22%	1.13%	2.81%	1.51%	58.13%	28.64%	13.23%	65.88%	2.59%	3.31%	2.83%	25.94%	6.77%	89.70%	2.22%	8.05%	45.52%	25.69%	28.14%	58.5%	40.1%	14	0	D +32.4%	D +7.1%	D +18.8%
9	12.81%	50.24%	18.82%	35.24%	1.05%	14.10%	43.37%	29.02%	27.61%	17.51%	43.60%	1.32%	19.42%	6.11%	41.61%	78.50%	3.95%	17.46%	52.57%	15.53%	31.90%	57.3%	40.9%	12	2	D +34.4%	D +0.9%	D +16.7%
10	28.33%	23.38%	48.65%	7.79%	1.94%	4.80%	45.72%	32.02%	22.26%	44.50%	12.76%	2.18%	7.05%	13.88%	16.65%	84.23%	2.88%	12.87%	49.38%	19.11%	31.43%	57.5%	40.9%	12	2	D +29.1%	R +1.5%	D +17.2%
20	30.04%	22.15%	64.04%	4.47%	6.25%	9.69%	66.46%	14.61%	18.92%	62.17%	8.59%	6.94%	14.36%	28.30%	18.16%	86.61%	2.12%	11.23%	50.45%	18.81%	30.57%	78.1%	21.0%	14	0	D +65.1%	D +50.7%	D +57.3%
24	42.02%	37.76%	67.48%	10.63%	7.00%	47.13%	66.57%	12.13%	21.30%	62.81%	15.65%	7.51%	42.22%	23.92%	34.11%	87.45%	1.90%	10.62%	45.30%	22.77%	31.86%	80.3%	18.8%	14	0	D +68%	D +49.4%	D +61.6%
25	7.96%	75.83%	26.60%	42.55%	0.43%	61.13%	32.92%	41.38%	25.70%	20.79%	53.26%	0.57%	61.19%	3.39%	66.94%	85.82%	2.98%	11.07%	29.10%	42.27%	28.61%	45.0%	53.8%	3	11	R +20.4%	D +2.6%	R +8.6%
26	10.32%	73.45%	22.58%	36.25%	0.57%	65.42%	35.69%	36.75%	27.56%	21.18%	47.57%	0.77%	66.17%	4.67%	64.29%	82.77%	3.10%	14.10%	28.65%	41.33%	30.00%	50.7%	48.0%	9	5	D +15.7%	R +2.2%	D +3%
27	7.07%	74.58%	17.87%	36.73%	0.39%	75.66%	35.72%	38.10%	26.18%	15.24%	45.38%	0.52%	72.02%	3.19%	63.12%	83.83%	3.09%	12.93%	26.85%	45.71%	27.44%	50.6%	48.3%	9	5	D +17.4%	R +0.6%	D +2.7%

Functional Analysis - Returns

		5	9	10	20	24	25	26	27	
Plan S019C8052		BVAP	41.73%	12.81%	28.33%	50.08%	42.09%	7.96%	10.32%	7.07%
Primary Elections		HVAP	9.04%	50.24%	23.38%	22.15%	37.76%	6.83%	73.35%	74.13%
2018	Governor (REP)	R_Baldauf	0.70%	0.84%	0.71%	1.36%	1.92%	1.93%	1.83%	1.50%
		R_DeSantis	52.44%	52.75%	52.09%	62.76%	66.52%	65.93%	67.74%	67.69%
		R_Devine	1.13%	1.98%	1.43%	2.20%	3.24%	2.92%	3.34%	3.09%
		R_Langford	1.13%	1.44%	1.65%	1.86%	1.97%	1.41%	1.72%	1.53%
		R_Mercadante	0.42%	1.28%	0.76%	1.51%	2.13%	1.93%	2.06%	2.14%
		R_Nathan	0.71%	1.00%	0.82%	1.54%	2.72%	1.13%	1.42%	1.39%
		R_Putnam	41.63%	37.93%	40.26%	25.36%	17.05%	21.84%	18.17%	18.84%
	R_White	1.62%	2.61%	2.11%	2.89%	3.92%	2.63%	3.54%	3.46%	
	Governor (DEM)	D_Gillum	58.39%	29.99%	45.49%	52.96%	50.35%	32.88%	31.83%	28.95%
		D_Graham	22.26%	29.75%	28.40%	13.34%	11.17%	19.31%	21.15%	22.65%
		D_Greene	5.72%	13.96%	8.69%	10.39%	9.34%	9.66%	10.62%	7.94%
		D_King	1.43%	4.29%	3.76%	0.94%	0.75%	2.33%	2.11%	1.54%
		D_Levine	10.71%	19.18%	12.46%	21.58%	27.53%	32.70%	32.23%	37.17%
		D_Lundmark	0.49%	1.12%	0.44%	0.30%	0.38%	1.37%	0.91%	0.78%
	D_Wetherbee	0.83%	1.64%	0.66%	0.38%	0.32%	1.27%	0.97%	0.68%	
	Attorney General (REP)	R_Moody	57.78%	54.44%	55.46%	55.57%	53.16%	52.08%	54.82%	54.79%
		R_White	42.22%	45.50%	44.57%	44.27%	46.64%	47.88%	45.11%	45.20%
	Attorney General (DEM)	D_Shaw	78.66%	61.11%	74.44%	81.44%	82.10%	67.77%	69.58%	74.09%
		D_Torrens	21.31%	38.88%	25.57%	18.56%	17.89%	32.10%	30.43%	25.91%
	Agriculture Commissioner (REP)	R_Caldwell	35.67%	36.42%	34.83%	43.50%	39.73%	42.29%	42.07%	40.18%
R_Grimsley		21.36%	31.97%	31.49%	25.91%	31.44%	29.71%	31.57%	32.70%	
R_McCalister		8.68%	16.25%	15.43%	21.17%	17.11%	12.78%	16.62%	16.76%	
Agriculture Commissioner (DEM)	R_Troutman	34.12%	15.22%	18.23%	9.04%	11.06%	15.05%	9.61%	10.37%	
	D_Fried	60.09%	55.10%	55.25%	63.92%	59.04%	52.18%	53.25%	59.89%	
	D_Porter	20.04%	18.57%	17.46%	16.10%	17.36%	20.02%	20.45%	15.13%	
US Senate (REP)	D_Walker	19.86%	26.32%	27.30%	19.96%	23.60%	27.59%	26.21%	24.88%	
	R_De La Fuente	10.20%	10.06%	11.29%	14.88%	15.74%	9.81%	12.28%	12.63%	
US Senate (DEM)	R_Scott	89.71%	89.89%	88.72%	84.91%	84.06%	90.09%	87.66%	87.32%	
	R_Beruff	22.31%	17.11%	17.64%	14.64%	8.73%	8.85%	6.43%	5.58%	
US Senate (REP)	R_Rivera	3.70%	3.21%	2.45%	5.03%	3.26%	2.20%	2.94%	1.88%	
	R_Rubio	68.00%	71.92%	74.53%	70.56%	80.12%	85.24%	85.70%	88.87%	
	R_Young	5.81%	7.56%	5.31%	9.37%	7.44%	3.59%	4.86%	3.46%	
US Senate (DEM)	D_De La Fuente	4.12%	14.95%	3.93%	3.17%	5.51%	19.30%	13.76%	12.16%	
	D_Grayson	17.53%	45.27%	40.72%	9.95%	10.82%	11.17%	11.16%	11.19%	
	D_Keith	15.18%	9.79%	12.71%	14.56%	13.82%	13.73%	15.63%	17.86%	
	D_Luster	12.08%	1.26%	2.28%	2.23%	2.68%	2.02%	1.68%	1.54%	
D_Murphy	50.94%	28.53%	40.28%	69.89%	66.91%	53.19%	57.51%	56.90%		
Governor (REP)	R_Adeshina	1.29%	1.69%	1.67%	2.66%	2.97%	1.46%	1.77%	1.80%	
	R_Cuevas-Neunder	8.09%	12.04%	9.60%	14.56%	16.32%	10.61%	15.19%	13.26%	
	R_Scott	90.47%	86.09%	88.64%	82.42%	80.36%	87.73%	82.95%	84.83%	
Governor (DEM)	D_Crist	74.34%	76.41%	78.84%	82.85%	84.35%	76.74%	78.42%	73.98%	
	D_Rich	25.58%	23.44%	21.17%	17.09%	15.61%	22.84%	21.48%	25.89%	
Attorney General (DEM)	D_Sheldon	60.86%	60.66%	49.68%	39.26%	46.77%	58.73%	61.40%	65.55%	
	D_Thurston	39.17%	39.26%	50.37%	60.66%	53.21%	40.91%	38.48%	34.37%	
2012	US Senate (REP)	R_Mack	57.58%	49.35%	58.32%	65.26%	71.78%	73.46%	73.64%	77.15%
		R_McCalister	18.65%	11.93%	10.93%	13.11%	6.85%	8.01%	7.36%	5.18%
		R_Stuart	5.92%	6.58%	4.88%	7.25%	13.13%	12.37%	13.26%	12.99%
	R_Weldon	17.45%	31.96%	25.74%	13.85%	8.00%	5.92%	5.67%	4.46%	
	US Senate (DEM)	D_Burkett	22.03%	19.38%	13.66%	14.24%	14.02%	21.21%	18.40%	14.76%
D_Nelson		77.91%	80.61%	86.30%	85.70%	85.93%	78.58%	81.49%	85.11%	

Functional Analysis - Returns

			5	9	10	20	24	25	26	27
Plan S019C8052		BVAP	43.73%	12.81%	28.33%	59.04%	42.02%	7.96%	10.32%	7.07%
General Elections		HVAP	9.04%	50.24%	23.38%	22.15%	37.76%	76.83%	79.35%	74.13%
2020	President	D_Biden	60.23%	58.79%	61.66%	75.53%	74.41%	40.98%	46.43%	49.44%
		R_Trump	38.62%	40.22%	37.34%	23.88%	25.06%	58.48%	52.99%	50.01%
2018	Governor	D_Gillum	62.51%	61.81%	62.29%	79.65%	81.56%	46.17%	52.49%	53.18%
		R_DeSantis	36.60%	36.87%	36.70%	19.73%	17.74%	52.44%	46.31%	45.75%
	Attorney General	D_Shaw	59.25%	58.41%	58.50%	78.13%	80.14%	44.45%	50.86%	51.99%
		R_Moody	39.21%	39.61%	39.86%	20.54%	18.30%	53.53%	46.94%	46.10%
	Chief Financial Officer	D_Ring	60.38%	60.81%	60.33%	79.52%	81.61%	45.82%	51.93%	52.59%
		R_Patronis	39.62%	39.19%	39.67%	20.46%	18.38%	54.17%	48.07%	47.41%
Agriculture Commissioner	D_Fried	61.38%	62.27%	62.23%	79.77%	82.11%	46.93%	53.44%	54.63%	
	R_Caldwell	38.63%	37.73%	37.77%	20.22%	17.88%	53.06%	46.56%	45.38%	
US Senate	D_Nelson	62.25%	60.52%	62.11%	79.66%	81.49%	46.47%	53.46%	54.47%	
	R_Scott	37.75%	39.48%	37.89%	20.33%	18.51%	53.52%	46.54%	45.52%	
2016	President	D_Clinton	58.51%	61.95%	60.09%	77.52%	81.10%	52.56%	56.46%	57.42%
		R_Trump	38.61%	34.53%	36.37%	20.71%	17.23%	45.16%	40.81%	40.05%
	US Senate	D_Murphy	52.82%	54.92%	54.84%	75.52%	76.02%	42.42%	47.69%	47.78%
R_Rubio		43.90%	41.03%	41.35%	22.53%	21.88%	55.35%	49.92%	50.17%	
2014	Governor	D_Crist	56.54%	52.80%	54.65%	79.64%	82.25%	43.00%	51.20%	50.00%
		R_Scott	39.85%	42.13%	40.77%	18.20%	16.17%	54.28%	45.89%	47.55%
	Attorney General	D_Sheldon	53.20%	49.01%	51.79%	75.88%	79.86%	38.72%	45.82%	46.03%
		R_Bondi	44.31%	48.13%	45.30%	22.66%	18.70%	58.94%	51.75%	51.96%
	Chief Financial Officer	D_Rankin	53.57%	48.88%	49.22%	75.36%	79.06%	40.24%	45.88%	43.49%
		R_Atwater	46.43%	51.12%	50.78%	24.62%	20.94%	59.75%	54.12%	56.53%
Agriculture Commissioner	D_Hamilton	55.57%	47.75%	49.27%	76.85%	79.82%	39.79%	46.04%	44.31%	
	R_Putnam	44.41%	52.25%	50.73%	23.15%	20.18%	60.19%	53.95%	55.69%	
2012	President	D_Obama	61.03%	61.43%	58.97%	80.43%	82.82%	51.07%	54.83%	52.22%
		R_Romney	38.14%	37.76%	40.24%	19.14%	16.82%	48.44%	44.61%	47.27%
	US Senate	D_Nelson	65.00%	65.98%	63.62%	81.94%	83.49%	52.79%	56.33%	54.47%
R_Mack		32.61%	31.57%	34.51%	16.83%	15.47%	45.07%	42.03%	44.15%	



Please Provide Completed Form To:
help@floridaredistricting.gov



House Committee on Redistricting
402 House Office Building
402 South Monroe Street
Tallahassee, FL 32399-1300

Senate Committee on Reapportionment
2000 The Capitol
404 South Monroe Street
Tallahassee, FL 32399-1100

*Field is required.

Prefix _____ *First Name Darryl *Last Name Rouson Suffix _____
Organization Name (if applicable) _____
*Your Address 535 Central Ave Suite 302 *City St Petersburg *State FL *Zip 33701
*Your County Pinellas Your Email rouson.darryl@flsenate.gov
*Your Phone Number 727-822-6828

*Have you received compensation or anything of value (travel, meals, lodging, etc.) from any groups or organizations that have an interest in redistricting as part of, or in exchange for, your comments, suggestions, or map?

YES NO

If YES, please list what you received and who provided it to you below:

List the name of every person(s), group(s), or organization(s) you collaborated with on your comment, suggestion, or submitted map below:

Barry Edwards
Robert Heere

By submitting this form, I acknowledge and agree to the following terms and conditions:

- YES, I understand that my comments, suggestions, or map submission may be displayed on www.FloridaRedistricting.gov or other public websites maintained by the Florida Legislature.
- YES, I understand that my communications with the Florida Legislature, including this form and any submitted materials, are subject to public records laws in Florida.



YES, I understand that I may be contacted by a member of the legislature or their staff to answer questions about my comments, suggestions, or map submission.



YES, I understand that similar to other pieces of legislation, input and ideas from members of the public must be proposed by Legislators in order to become part of bills or amendments.

The Florida Legislature acknowledges the importance of transparency throughout the entire redistricting process. By engaging in the redistricting process – through comments, suggestions, or map submissions – it is possible your detailed communications and submissions may be included, reviewed, and examined in all steps of the legislative process until, and even after, new district maps are enacted into law.

Warry B. Brown

*Your Signature

1/6/2021

*Date

Please provide detailed comments regarding your suggestion. Florida’s redistricting plans must be drawn and approved in alignment with Florida’s constitutional standards and federal law.

*If you are submitting a map, please select the Plan Type and provide the unique Plan Number included in your Submission Receipt email: bff4eefb86d9420fa2293d83b9e13fc3

Plan Type:



Congressional



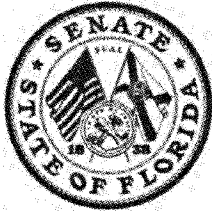
State House



State Senate

*If you are submitting comments or suggestions about a plan already published at www.FloridaRedistricting.gov, please provide the name of the plan:

Details:



THE FLORIDA SENATE COMMITTEE ON REAPPORTIONMENT

Location
2000 The Capitol

Mailing Address
404 South Monroe Street
Tallahassee, Florida 32399-1100
(850) 487-5855

Senator Ray Wesley Rodrigues, *Chair*
Senator Doug Broxson, *Vice Chair*

Professional Staff: Jay Ferrin, *Staff Director*

Senate's Website: www.flsenate.gov

MEMORANDUM

To: Mr. Jay Ferrin, Staff Director
From: Senator Ray Rodrigues, Chair
Subject: Committee Directives to Staff on Map-Drawing
Date: October 18, 2021

Senators of the Committee on Reapportionment have reviewed the census data, the features of the map-drawing application, and the relevant criteria, history, and legal standards. I believe that we have the proper foundation upon which to direct you and your staff to produce a series of maps for our consideration.

First and foremost, you are directed to the plain language of the constitution, federal law, and the judicial precedent that exists today in regards to that language. The Constitution sets forth two tiers of redistricting standards, and provides that the Tier-Two standards apply unless complying with them would conflict with the Tier-One standards or with federal law. The Tier-One standards control in the event of a conflict with Tier-Two standards, but in all other circumstances the Tier-Two standards must control the drawing of district lines. Therefore staff is directed to comply with the objective criteria outlined in Tier Two of Article III Sections 20 and 21 of the Florida Constitution, balancing them in a manner that does not establish any priority of one standard over another, unless complying with the Tier-Two standards would conflict with Tier-One standards or federal law.

In accordance with the Tier Two standard of the constitutional requirements related to equal population, you are directed to prepare Senate plans with district population deviations not to exceed 1% of the ideal population of 538,455 people, and to prepare Congressional plans with population deviations of plus or minus one person of the ideal population of 769,221 people.

To comply with the Tier Two standard related to compactness, you are directed to draw districts that are visually compact in relation to their shape and geography, and to use mathematical compactness scores where appropriate.

To comply with the Tier Two standard related to utilizing existing political boundaries, you are directed to examine the use of county boundaries where feasible. Furthermore, you are directed to explore concepts that, where feasible, result in districts consisting of whole counties in less populated areas, and to explore concepts that, where feasible, keep districts wholly within a county in the more densely populated areas.

With respect to municipal boundaries, you are directed to explore concepts that, where feasible, keep cities whole while also considering the impermanent and changing nature of municipal boundaries.

You are further directed to examine the use of existing geographic boundaries where feasible. Specifically railways, interstates, federal and state highways, and large water bodies such as those that were deemed to be easily recognizable and readily ascertainable by Florida's Supreme Court. We recognize that these geographic features afford us an opportunity to create districts with static boundaries, and would ask that Staff present the boundary analysis report with each plan so that we can determine coincidence of districts' boundaries with these features.

Further, you are directed, when drawing compact districts consistent with the population equality requirements, and that utilize political and geographic boundaries where feasible, to confirm that the districts comply with the Tier-One constitutional standards and with federal law, specifically, that that districts are not drawn with the result of denying or abridging the equal opportunity of racial or language minorities to participate in the political process or diminish their ability to elect representatives of their choice. You are directed to conduct a functional analysis on relevant districts to confirm that any map presented for consideration by this Committee or its Select Subcommittees complies with these Tier-One requirements of the Florida Constitution and with the federal Voting Rights Act.

Regarding compliance with the Tier One standard related to the intent to favor or disfavor a political party, you are directed to draw districts without reviewing political data other than where a review of political data is required to perform an appropriate functional analysis to evaluate whether a minority group has the ability to elect representatives of choice.

To comply with the Tier One standard related to intent to favor or disfavor an incumbent, you are directly to draw districts without the use of any residence information of any sitting member of the Florida Legislature or Congress and to draw districts without regard to the preservation of existing district boundaries.

We believe that by limiting the considerations to those adopted by the citizens of Florida, this process will produce constitutionally compliant maps. While the standards that are to be considered require a balancing act it, is important to remember that the standards themselves are

Committee Directives to Staff on Map-Drawing
October 18, 2021
Page 3

not optional. Choices made by staff and approved by this committee should be made based on compliance with the objective constitutional criteria.

You are directed to produce a series of plans for each of our Select Subcommittees to workshop. All plans you bring forward must comply with the complex layering of federal and state standards. You will be asked to explain the various trade-offs within the co-equal Tier Two standards presented in each plan. It is within the balancing of these tradeoffs that Senators on the committee must exercise our legislative discretion and produce a constitutionally compliant map.

If staff receives any suggestion that a plan be drafted or changed with the intent to favor or disfavor any incumbent or political party, staff is directed to disregard the suggestion entirely, document the conversation in writing, and report the conversation directly to the Senate President.

Thank you for your attention to these directives. Please notify me, as well as Chairs Bradley and Burgess when you have completed work pertinent to their respective select subcommittees so that workshops can be noticed. Again, thank you and we look forward to reviewing your work.

The Florida Senate

APPEARANCE RECORD

Redistricting

Jan 10, 2022

Meeting Date

Deliver both copies of this form to Senate professional staff conducting the meeting

Bill Number or Topic

Redistricting, Cong.

Committee

Amendment Barcode (if applicable)

Name Cecile Scoon

Phone 850-319-1975

Address 512 Bunkers Cove Rd

Email cmscoon1@knology.net

Street

Panama City FL 3240

City

State

Zip

Speaking: [] For [] Against [X] Information OR Waive Speaking: [] In Support [] Against

PLEASE CHECK ONE OF THE FOLLOWING:

[] I am appearing without compensation or sponsorship.

[] I am a registered lobbyist, representing:

[X] I am not a lobbyist, but received something of value for my appearance (travel, meals, lodging, etc.), sponsored by:

President Florida League of Women Voters

While it is a tradition to encourage public testimony, time may not permit all persons wishing to speak to be heard at this hearing. Those who do speak may be asked to limit their remarks so that as many persons as possible can be heard. If you have questions about registering to lobby please see Fla. Stat. 511.045 and Joint Rule 1. 2020-2022 Joint Rules.pdf (flsenate.gov)

This form is part of the public record for this meeting.

S-001 (08/10/2021)

CourtSmart Tag Report

Room: KB 412

Case No.: -

Type:

Caption: Select Subcommittee on Congressional Reapportionment

Judge:

Started: 1/10/2022 9:03:26 AM

Ends: 1/10/2022 9:46:27 AM

Length: 00:43:02

9:03:39 AM Meeting is called to order; Danna Ivey calls the roll
9:04:53 AM Chair Bradley makes introductory remarks
9:05:50 AM Tab 1: Workshop on Congressional Maps presented by Jay Ferrin, Staff Director
9:31:11 AM Chair Bradley asks if there are any questions or discussion
9:31:20 AM Chair Bradley gives a comment
9:32:17 AM Sen. Harrell also gives a comment
9:33:46 AM Sen. Rouson is recognized to explain his submitted plan
9:36:16 AM Sen. Harrell asks a question
9:36:57 AM Sen. Rouson responds
9:37:23 AM Chair Bradley asks Sen. Rouson a question
9:38:35 AM Sen. Rouson responds
9:39:41 AM Tab 2: Public Comment
9:39:59 AM Cecile Scoon, President of Florida League of Women Voters gives public comment
9:42:06 AM Chair Bradley proposes a recommendation to the Committee on Reapportionment
9:43:10 AM No objections to the recommendation
9:44:55 AM Meeting adjourned