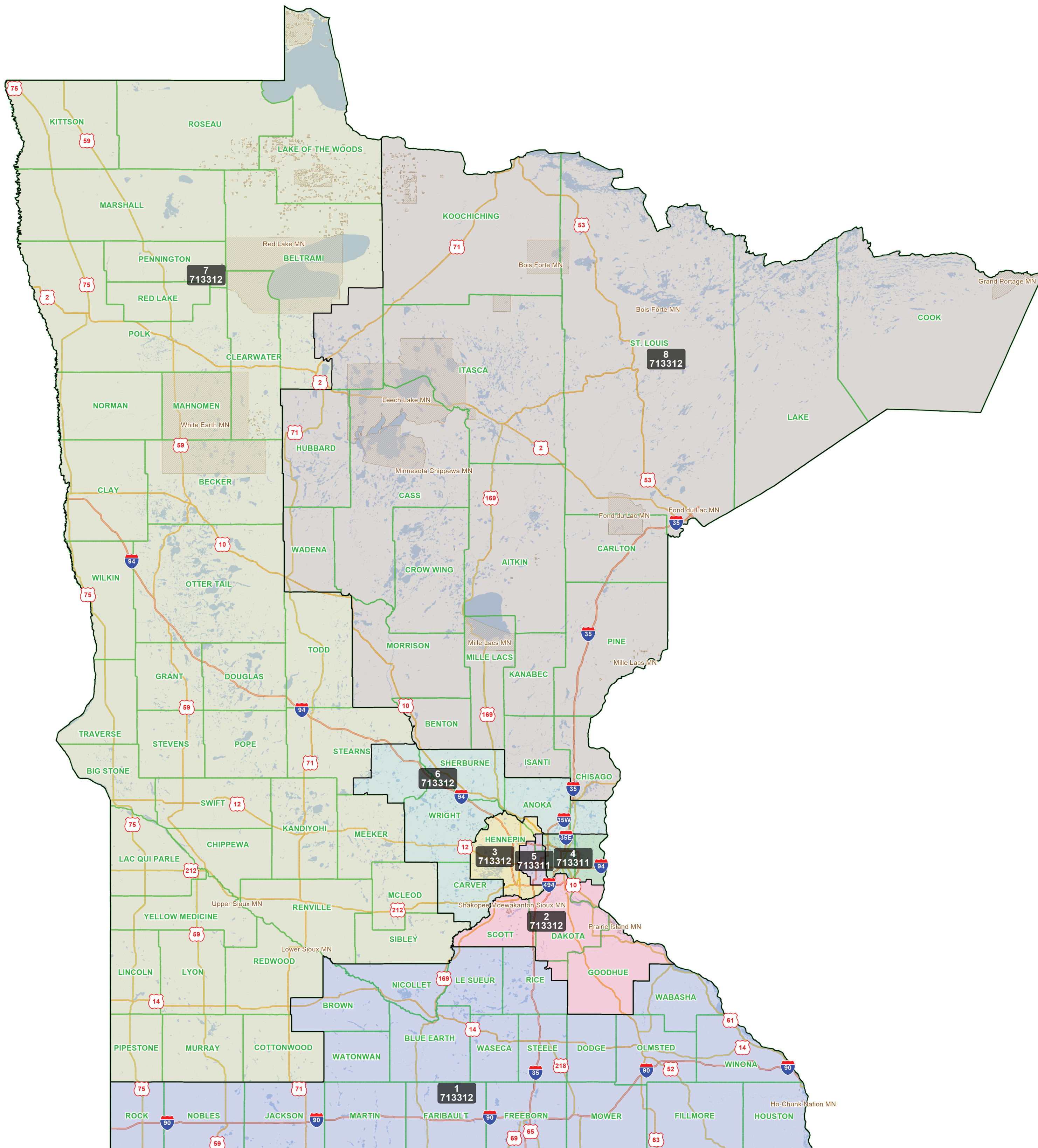


Congressional Districts

— Statewide Map —

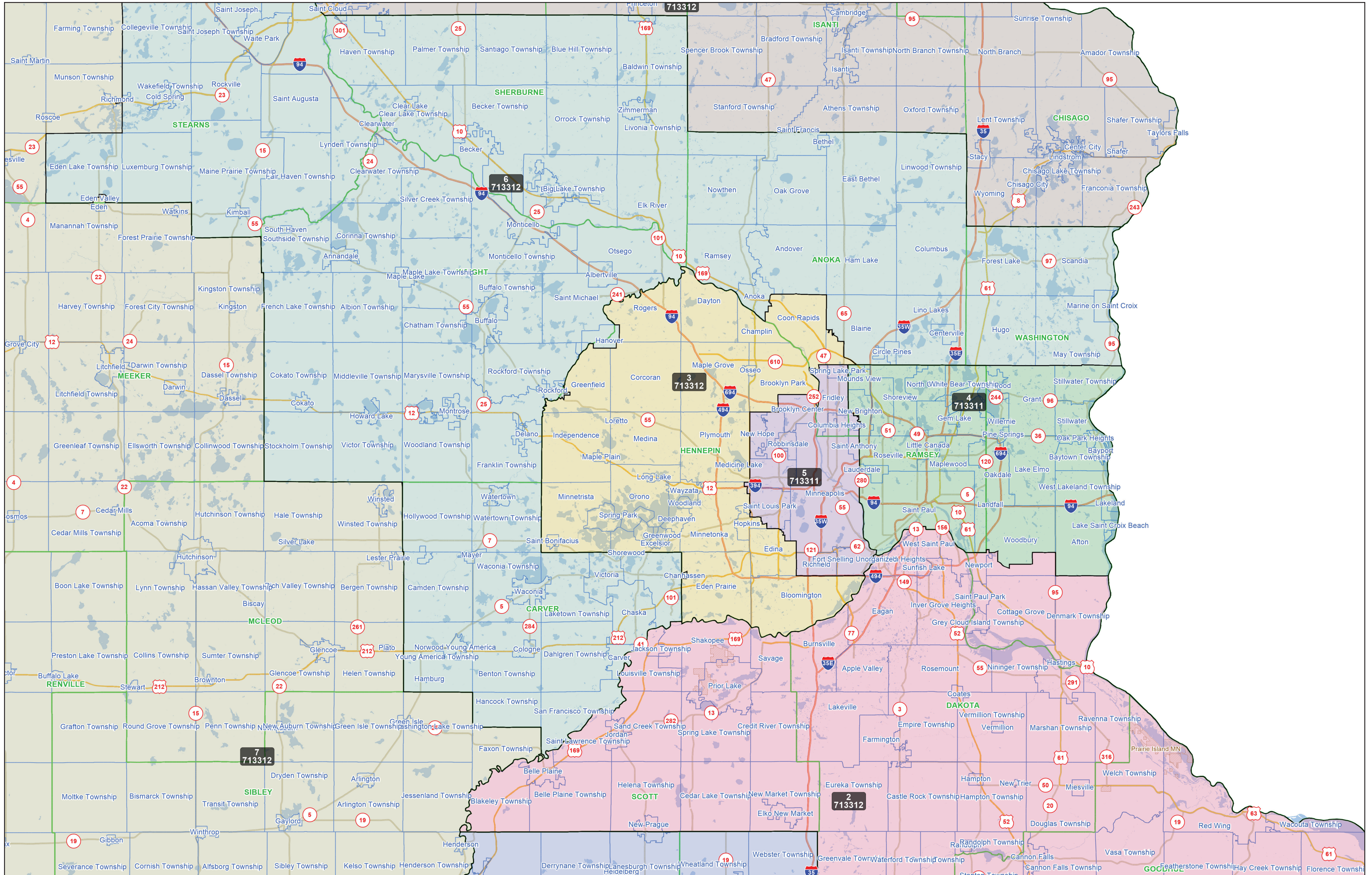
Paul Anderson et al



Congressional Districts

— Metro Map —

Paul Anderson et al



FILED

December 7, 2021

**OFFICE OF
APPELLATE COURTS**

ANDERSON PLAINTIFFS' CONGRESSIONAL PLAN REPORTS

TABLE OF CONTENTS

- Tab. A. Plan Components (Short) Report
- Tab. B. Plan Components (Long) Report
- Tab. C. Population Summary Report
- Tab. D. Minority Voting-Age Population Report
- Tab. E. Minority Total Population Report
- Tab. F. Communities of Interest (Reservation Splits) Report
- Tab. G. Contiguity Report
- Tab. H. Political Subdivision Splits Report
- Tab. I. Measures of Compactness Report
- Tab. J. Districts & Their Incumbents Report

Tab A

Plan Components (Short)

Thursday, December 2, 2021 10:07 PM

District 1

County Blue Earth

County Brown

County Dodge

County Faribault

County Fillmore

County Freeborn

County Houston

County Jackson

County Le Sueur

County Martin

County Mower

County Nicollet

County Nobles

County Olmsted

County Rice

MCD Bridgewater Township

MCD Cannon City Township

MCD Dundas City

VTD: 271310015

1043	1044	1048	1049	1051	1052	1053	1054	1055	1056	1059	1060
------	------	------	------	------	------	------	------	------	------	------	------

1061	1065	1066	1070	1072
------	------	------	------	------

2008

4022	4023	4042	4043	4044	4045	4046	4047	4048	4049	4070	4071
------	------	------	------	------	------	------	------	------	------	------	------

4072	4074	4075	4076	4077
------	------	------	------	------

MCD Erin Township

MCD Faribault City

MCD Forest Township

MCD Lonsdale City

MCD Morristown City

MCD Morristown Township

MCD Nerstrand City

MCD Richland Township

MCD Shieldsville Township

MCD Walcott Township

MCD Warsaw Township

MCD Webster Township

MCD Wells Township

MCD Wheatland Township

MCD Wheeling Township

County Rock

County Steele

County Wabasha

County Waseca

District 1

County Watonwan

County Winona

District 2

County Dakota

County Goodhue

County Rice

MCD Dennison City

MCD Dundas City

VTD: 271310015

1018 1019 1020 1021 1022 1023 1024 1025 1026 1032 1033 1034

1035 1036 1037 1038 1039 1040 1041 1042 1045 1046 1047 1050

1057 1058 1062 1063

MCD Northfield City

MCD Northfield Township

County Scott

County Washington

MCD Cottage Grove City

MCD Denmark Township

MCD Grey Cloud Island Township

MCD Hastings City

MCD Newport City

MCD Saint Paul Park City

MCD Woodbury City

VTD: 271630395

1014

VTD: 271630440

4000 4002 4003 4004 4005 4006 4007 4008 4009 4010 4011 4012

4013 4014 5006 5007 5008 5009

VTD: 271630445

5003 5004 5005 6014 6015 6016 6017 6018 6019 6020 6021 6022

VTD: 271630450

6000 6001 6012 6013

District 3

County Anoka

MCD Blaine City

VTD: 270030305

VTD: 270030310

VTD: 270030315

2000 2001 2002 2003 2004 2005 2006 2007 2008 2009 2010 2011

2012 2013 2014 2015 2021 2022 2023 2024 2025 2026 2027 2028

2029 2030 2031 2032 2033

4017 4018 4019 4020 4021 4022 4023 4024 4025 4026 4027 4029

4030 4041 4042 4043 4044 4045 4046 4047

VTD: 270030320

VTD: 270030405

1003 1004 1005 1007 2000 2002 2003 2005 2006 2007 2008 2009

2010 2011 2012 2013 2014 2015 2016 2017 2018

District 3

County Anoka

MCD Blaine City
 VTD: 270030410
 VTD: 270030415
 1000 1001 1002 1003 1009 1010
 MCD Coon Rapids City

County Hennepin

MCD Bloomington City
 MCD Brooklyn Park City
 MCD Champlin City
 MCD Corcoran City
 MCD Dayton City
 MCD Deephaven City
 MCD Eden Prairie City
 MCD Edina City
 VTD: 270530850
 VTD: 270530855
 VTD: 270530860
 VTD: 270530865
 1000 1001 1002 1003 1009
 2003 2004 2005 2006 2007 2011 2012 2015 2016 2017 2018 2019
 2005
 2020 2021 2022 2027 2028 2030 2031 2032 2033 2034 2035 2037
 2038 2039 2040 2042
 VTD: 270530875
 VTD: 270530880
 VTD: 270530885
 VTD: 270530890
 VTD: 270530895
 VTD: 270530900
 VTD: 270530905
 VTD: 270530910
 VTD: 270530915
 VTD: 270530920
 VTD: 270530925
 VTD: 270530930
 VTD: 270530935
 VTD: 270530940
 VTD: 270530945
 MCD Excelsior City
 MCD Greenfield City
 MCD Greenwood City
 MCD Hopkins City
 MCD Independence City
 MCD Long Lake City
 MCD Loretto City
 MCD Maple Grove City

District 3

County Hennepin

- MCD Maple Plain City
- MCD Medicine Lake City
- MCD Medina City
- MCD Minnetonka Beach City
- MCD Minnetonka City
- MCD Minnetrista City
- MCD Mound City
- MCD Orono City
- MCD Osseo City
- MCD Plymouth City
- MCD Rogers City
- MCD Saint Bonifacius City
- MCD Shorewood City
- MCD Spring Park City
- MCD Tonka Bay City
- MCD Wayzata City
- MCD Woodland City

District 4

County Ramsey

- MCD Arden Hills City
- MCD Blaine City
- MCD Falcon Heights City
- MCD Gem Lake City
- MCD Lauderdale City
- MCD Little Canada City
- MCD Maplewood City
- MCD Mounds View City
- MCD New Brighton City

VTD: 271230330

VTD: 271230340

1000	1001	1003	1004	5003	5004	5005	5006	5007	5008	5009	5010
1012	1013	1014	1015	1016	1017	1018	1019	1020	1021	1022	1023
1024	1025	1026	1027	1028	1030	1031	1032	1033	1034	2000	2001
2002	2013										
2002	2003	2004	2005	2006	2007	2008	2009	2010	2011	2012	2013
2014	2015	2016	2017	2018	2019	2020	2021	2022			

VTD: 271230345

2011 2013

VTD: 271230350

1000	1010	1011	4004	4005	4006	4008	4009	4010	4013	4014	4015
1000	1001	1002	1003	1004	1005	1006	1007	1008	1009	1010	1011
1029	1035	3000	3001	3002	3003	3004	3005	3006	3007		
1038											
2000	2001	2002	2005								
2001											
4016	4017	4018	4019	4020	4021	4022	4023	4024			

District 4

County Ramsey

- MCD New Brighton City
 - VTD: 271230355
 - VTD: 271230360
 - VTD: 271230365
- MCD North Oaks City
- MCD North Saint Paul City
- MCD Roseville City
- MCD Saint Paul City
- MCD Shoreview City
- MCD Spring Lake Park City
- MCD Vadnais Heights City
- MCD White Bear Lake City
- MCD White Bear Township

County Washington

- MCD Afton City
 - MCD Bayport City
 - MCD Baytown Township
 - MCD Birchwood Village City
 - MCD Dellwood City
 - MCD Grant City
 - MCD Lake Elmo City
 - MCD Lake Saint Croix Beach City
 - MCD Lakeland City
 - MCD Lakeland Shores City
 - MCD Landfall City
 - MCD Mahtomedi City
 - MCD Oak Park Heights City
 - MCD Oakdale City
 - MCD Pine Springs City
 - MCD Saint Marys Point City
 - MCD Stillwater City
 - MCD Stillwater Township
 - MCD West Lakeland Township
 - MCD White Bear Lake City
 - MCD Willernie City
 - MCD Woodbury City
 - VTD: 271630375
 - VTD: 271630380
 - VTD: 271630385
 - VTD: 271630390
 - VTD: 271630395
- | | | | | | | | | | | | |
|------|------|------|------|------|------|------|------|------|------|------|------|
| 1000 | 1001 | 1002 | 1003 | 1004 | 1005 | 1006 | 1007 | 1008 | 1009 | 1010 | 1011 |
| 1012 | 1013 | 2002 | 2003 | 2004 | 2005 | 2006 | 2007 | 2008 | 2009 | 2010 | 2011 |
| 2012 | 3000 | 3001 | 3002 | 3003 | 3004 | 3005 | 3006 | 3007 | | | |
- VTD: 271630400
 - VTD: 271630405

District 4

County Washington

MCD Woodbury City

VTD: 271630410

VTD: 271630415

VTD: 271630420

VTD: 271630425

VTD: 271630430

VTD: 271630435

VTD: 271630440

1000	1001	1002	1003								
2008	2009	2010	2011	2012	2013	2014	2015	3007	3008	3009	

VTD: 271630445

1000	1001	1002	1003	1004	1005	1006	1007	1008	1009	1010	1011
5000	5001	5002	6002	6003	6004	6005	6006	6007	6008	6009	6010
6011											

VTD: 271630450

1000	1001	1002	1003	1004	1005	1006	1007	1008	1009	1010	1011
1012	1013	1014	1015	1016	1017	2000	2001	2002	2003	2004	2005
2006	2007	2008	2009	2010	2011	2012	2013	2014	2015	2016	
2018	2019	2020	2021	2022	2023	2024	2025	3015	3016	3017	3018
3019	3020	3021	3022	3023	3029	3030					

District 5

County Anoka

MCD Columbia Heights City

MCD Fridley City

MCD Hilltop City

MCD Spring Lake Park City

County Hennepin

MCD Brooklyn Center City

MCD Crystal City

MCD Edina City

VTD: 270530865

1003	1004	1005	1006	1007	1008	1009	1010	1011	1012	2000	2001
2002	2008	2009	2010	2023	2024	2025	2026	2036	3000	3001	3002
3003	3004	3005	3006	3007	3008	3009	3010	3011	3012	3013	3014
3015	3016	3017	3018	3019							

VTD: 270530870

MCD Fort Snelling Unorganized

MCD Golden Valley City

MCD Minneapolis City

MCD New Hope City

MCD Richfield City

MCD Robbinsdale City

MCD Saint Anthony City

MCD Saint Louis Park City

District 5

County Ramsey

MCD New Brighton City

VTD: 271230335

VTD: 271230340

1000

2023

5000 5001 5002 5011 5012

VTD: 271230345

1001 1002 1003 1004 1005 1006 1007 2006 2007 2008 2009 2010

2012 2014 2015 2016 2017 2018 3000 3001 3002 3003 3004 3005

3006 3007 3008 3009 3010 3011

VTD: 271230350

2003 2004

MCD Saint Anthony City

District 6

County Anoka

MCD Andover City

MCD Anoka City

MCD Bethel City

MCD Blaine City

VTD: 270030315

4028

VTD: 270030325

VTD: 270030330

VTD: 270030335

VTD: 270030340

VTD: 270030405

1006 2001 2004

3006 3007 3008 3009 3010

VTD: 270030415

1000 1001 1002 1003 1004 1005 1006 1007 1008 1009 2000 2001

2002 2003 2004 2005 2006 2007 2008 2009 2010 2011 2012 2013

2014 2015 2016 2017 3003 3004 3005 3006 3007 3008 3010 3011

3014

4005

VTD: 270030420

VTD: 270030425

VTD: 270030430

VTD: 270030435

VTD: 270030440

VTD: 270030505

VTD: 270030510

VTD: 270030515

VTD: 270030520

VTD: 270030525

VTD: 270030530

VTD: 270030535

District 6

County Anoka

- MCD Blaine City
VTD: 270030540
- MCD Centerville City
- MCD Circle Pines City
- MCD Columbus City
- MCD East Bethel City
- MCD Ham Lake City
- MCD Lexington City
- MCD Lino Lakes City
- MCD Linwood Township
- MCD Nowthen City
- MCD Oak Grove City
- MCD Ramsey City
- MCD Saint Francis City

County Carver

County Hennepin

- MCD Chanhassen City
- MCD Hanover City
- MCD Rockford City

County Sherburne

County Stearns

- MCD Clearwater City
- MCD Cold Spring City
- MCD Collegeville Township
- MCD Eden Lake Township
- MCD Fair Haven Township
- MCD Kimball City
- MCD Luxemburg Township
- MCD Lynden Township
- MCD Maine Prairie Township
- MCD Richmond City
VTD: 271450230
1093 1094 1097 1100
2015
- MCD Rockville City
- MCD Saint Augusta City
- MCD Saint Cloud City
- MCD Saint Joseph City
- MCD Saint Joseph Township
- MCD Waite Park City
- MCD Wakefield Township

County Washington

- MCD Forest Lake City
- MCD Hugo City
- MCD Marine on Saint Croix City
- MCD May Township

District 6

County Washington

MCD Scandia City

County Wright

District 7

County Becker

County Beltrami

- MCD Alaska Township
- MCD Battle Township
- MCD Bemidji City
- MCD Bemidji Township
- MCD Benville Township
- MCD Buzzle Township
- MCD Eckles Township
- MCD Grant Valley Township
- MCD Hamre Township
- MCD Jones Township
- MCD Kelliher City
- MCD Kelliher Township
- MCD Lammers Township
- MCD Lee Township
- MCD Liberty Township
- MCD Lower Red Lake Unorganized
- MCD Maple Ridge Township
- MCD Minnie Township
- MCD North Beltrami Unorganized
- MCD Northern Township

VTD: 270070170

1005	1006	1007	1008	1009	1010	1012	1013	1014	1015	1016	1017
1018	1019	1020	1021	1024	1025	1028	1035	1036	2000	2001	2002
1030	1031	1032	1033	1034	1036	1037	1038	1043	1044	1045	1046
1047	1048	1049	1050	1051							
2000	2001	2002	2019								
3000	3001	3002	3003	3004	3005	3006	3007	3008	3009	3012	3013
3014	3016	3017	3018	3019	3020	3021	3022	3023	3024	3025	3026
3027	3028	3033	3034								

3052

VTD: 270070172

- MCD Quiring Township
- MCD Roosevelt Township
- MCD Shotley Brook Unorganized
- MCD Shotley Township
- MCD Solway City
- MCD Spruce Grove Township
- MCD Steenerson Township
- MCD Upper Red Lake Unorganized
- MCD Waskish Township
- MCD Wilton City

District 7**County Beltrami**

MCD Woodrow Township

County Big Stone**County Chippewa****County Clay****County Clearwater****County Cottonwood****County Douglas****County Grant****County Kandiyohi****County Kittson****County Lac qui Parle****County Lake of the Woods****County Lincoln****County Lyon****County Mahnomon****County Marshall****County McLeod****County Meeker****County Murray****County Norman****County Otter Tail****County Pennington****County Pipestone****County Polk****County Pope****County Red Lake****County Redwood****County Renville****County Roseau****County Sibley****County Stearns**

MCD Albany City

MCD Albany Township

MCD Ashley Township

MCD Avon City

MCD Avon Township

MCD Belgrade City

MCD Brockway Township

MCD Brooten City

MCD Crow Lake Township

MCD Crow River Township

MCD Eden Valley City

MCD Elrosa City

MCD Farming Township

MCD Freeport City

MCD Getty Township

District 7

County Stearns

- MCD Greenwald City
- MCD Grove Township
- MCD Holding Township
- MCD Holdingford City
- MCD Krain Township
- MCD Lake George Township
- MCD Lake Henry City
- MCD Lake Henry Township
- MCD Le Sauk Township
- MCD Meire Grove City
- MCD Melrose City
- MCD Melrose Township
- MCD Millwood Township
- MCD Munson Township
- MCD New Munich City
- MCD North Fork Township
- MCD Oak Township
- MCD Paynesville City
- MCD Paynesville Township
- MCD Raymond Township
- MCD Richmond City

VTD: 271450230

1014	1015	1018	1019	1020	1021	1022	1023	1024	1025	1026	1028
1029	1030	1031	1034	1044	1045	1046	1052	1053	1054	1055	1056
1057	1058	1059	1060	1061	1062	1063	1064	1065	1066	1067	1072
1073	1074	1075	1076	1077	1078	1079	1080	1081	1082	1083	1084
1085	1086	1087	1088	1089	1090	1091	1092	1095	1096	1098	1099
1101	1102	1103	1104	1105	1106	1107	1108	1109	1110	1111	1112
1113	1114	1115	1116	1117	1118	1119	1120	1121	1122		
3005	3007	3008	3009	3012	3016	3021	3022				

- MCD Roscoe City
- MCD Saint Anthony City
- MCD Saint Martin City
- MCD Saint Martin Township
- MCD Saint Rosa City
- MCD Saint Stephen City
- MCD Saint Wendel Township
- MCD Sartell City
- MCD Sauk Centre City
- MCD Sauk Centre Township
- MCD Spring Hill City
- MCD Spring Hill Township
- MCD Zion Township

County Stevens

County Swift

County Todd

District 7

County Traverse

County Wilkin

County Yellow Medicine

District 8

County Aitkin

County Beltrami

MCD Birch Township

MCD Blackduck City

MCD Brook Lake Unorganized

MCD Cormant Township

MCD Durand Township

MCD Frohn Township

MCD Funkley City

MCD Hagali Township

MCD Hines Township

MCD Hornet Township

MCD Langor Township

MCD Moose Lake Township

MCD Nebish Township

MCD Northern Township

VTD: 270070170

1000 1001 1002 1003 1011

1014 1015 1016 1020 1021 1022 1023 1024 1025 1026 1027 1035

1039 1040 1041 1042

MCD O'Brien Township

MCD Port Hope Township

MCD Shooks Township

MCD Sugar Bush Township

MCD Summit Township

MCD Taylor Township

MCD Ten Lake Township

MCD Tenstrike City

MCD Turtle Lake Township

MCD Turtle River City

MCD Turtle River Township

County Benton

County Carlton

County Cass

County Chisago

County Cook

County Crow Wing

County Hubbard

County Isanti

County Itasca

County Kanabec

County Koochiching

County Lake

District 8

County Mille Lacs

County Morrison

County Pine

County St. Louis

County Wadena

Tab B

Plan Components

Saturday, December 4, 2021

2:41 PM

	Population
District 1	
County: Blue Earth	69,112
County: Brown	25,912
County: Dodge	20,867
County: Faribault	13,921
County: Fillmore	21,228
County: Freeborn	30,895
County: Houston	18,843
County: Jackson	9,989
County: Le Sueur	28,674
County: Martin	20,025
County: Mower	40,029
County: Nicollet	34,454
County: Nobles	22,290
County: Olmsted	162,847
County: Rice (part)	
Bridgewater Township	1,830
Cannon City Township	1,226
Dundas City (part)	44
Subtotal	862
Dundas City Subtotal	862
Erin Township	836
Faribault City	24,453
Forest Township	1,330
Lonsdale City	4,661
Morristown City	958
Morristown Township	638
Nerstrand City	273
Richland Township	376
Shieldsville Township	1,056
Walcott Township	929
Warsaw Township	1,276
Webster Township	1,777
Wells Township	1,545
Wheatland Township	1,286
Wheeling Township	525
County Rice Subtotal	45,837
County: Rock	9,704
County: Steele	37,406
County: Wabasha	21,387
County: Waseca	18,968
County: Watonwan	11,253

	Population
District 1	
County: Winona	49,671
District 1 Total	713,312
District 2	
County: Dakota	439,882
County: Goodhue	47,582
County: Rice (part)	
Dennison City	14
Dundas City (part)	102
Subtotal	850
Dundas City Subtotal	850
Northfield City	19,539
Northfield Township	857
County Rice Subtotal	21,260
County: Scott	150,928
County: Washington (part)	
Cottage Grove City	38,839
Denmark Township	1,801
Grey Cloud Island Township	283
Hastings City	2
Newport City	3,797
Saint Paul Park City	5,544
Woodbury City (part)	65
Subtotal	3,394
Woodbury City Subtotal	3,394
County Washington Subtotal	53,660
District 2 Total	713,312
District 3	
County: Anoka (part)	
Blaine City (part)	2,159
Subtotal	13,822
Blaine City Subtotal	13,822
Coon Rapids City	63,599
County Anoka Subtotal	77,421
County: Hennepin (part)	
Bloomington City	89,997
Brooklyn Park City	86,478
Champlin City	23,919
Corcoran City	6,193
Dayton City	7,212
Deephaven City	3,899
Eden Prairie City	64,188
Edina City (part)	2,950
Subtotal	48,247
Edina City Subtotal	48,247

	Population
District 3	
County: Hennepin (part)	
Excelsior City	2,355
Greenfield City	2,903
Greenwood City	726
Hopkins City	19,097
Independence City	3,755
Long Lake City	1,741
Loretto City	646
Maple Grove City	70,245
Maple Plain City	1,743
Medicine Lake City	337
Medina City	6,837
Minnetonka Beach City	546
Minnetonka City	53,763
Minnetrista City	8,267
Mound City	9,393
Orono City	8,315
Osseo City	2,688
Plymouth City	81,026
Rogers City	13,295
Saint Bonifacius City	2,307
Shorewood City	7,779
Spring Park City	1,734
Tonka Bay City	1,442
Wayzata City	4,434
Woodland City	384
County Hennepin Subtotal	635,891
District 3 Total	713,312
District 4	
County: Ramsey (part)	
Arden Hills City	9,939
Blaine City	0
Falcon Heights City	5,369
Gem Lake City	528
Lauderdale City	2,271
Little Canada City	10,819
Maplewood City	42,088
Mounds View City	13,249
New Brighton City (part)	2,542
Subtotal	17,845
New Brighton City Subtotal	17,845
North Oaks City	5,272
North Saint Paul City	12,364
Roseville City	36,254
Saint Paul City	311,527
Shoreview City	26,921

	Population
District 4	
County: Ramsey (part)	
Spring Lake Park City	205
Vadnais Heights City	12,912
White Bear Lake City	24,486
White Bear Township	11,049
County Ramsey Subtotal	543,098
County: Washington (part)	
Afton City	2,955
Bayport City	4,024
Baytown Township	2,088
Birchwood Village City	863
Dellwood City	1,167
Grant City	3,970
Lake Elmo City	11,326
Lake Saint Croix Beach City	1,050
Lakeland City	1,710
Lakeland Shores City	339
Landfall City	843
Mahtomedi City	8,149
Oak Park Heights City	4,839
Oakdale City	28,323
Pine Springs City	377
Saint Marys Point City	346
Stillwater City	19,420
Stillwater Township	1,859
West Lakeland Township	3,976
White Bear Lake City	397
Willernie City	504
Woodbury City (part)	4,470
Subtotal	71,688
Woodbury City Subtotal	71,688
County Washington Subtotal	170,213
District 4 Total	713,311
District 5	
County: Anoka (part)	
Columbia Heights City	21,973
Fridley City	29,590
Hilltop City	958
Spring Lake Park City	6,983
County Anoka Subtotal	59,504
County: Hennepin (part)	
Brooklyn Center City	33,782
Crystal City	23,414
Edina City (part)	2,715
Subtotal	5,247

	Population
District 5	
County: Hennepin (part)	
Edina City Subtotal	5,247
Fort Snelling Unorganized	438
Golden Valley City	22,552
Minneapolis City	429,956
New Hope City	21,902
Richfield City	36,994
Robbinsdale City	14,646
Saint Anthony City	5,612
Saint Louis Park City	50,010
County Hennepin Subtotal	644,553
County: Ramsey (part)	
New Brighton City (part)	1,776
Subtotal	5,609
New Brighton City Subtotal	5,609
Saint Anthony City	3,645
County Ramsey Subtotal	9,254
District 5 Total	713,311
District 6	
County: Anoka (part)	
Andover City	32,601
Anoka City	17,921
Bethel City	476
Blaine City (part)	4,867
Subtotal	56,400
Blaine City Subtotal	56,400
Centerville City	3,896
Circle Pines City	5,025
Columbus City	4,159
East Bethel City	11,786
Ham Lake City	16,464
Lexington City	2,248
Lino Lakes City	21,399
Linwood Township	5,334
Nowthen City	4,536
Oak Grove City	8,929
Ramsey City	27,646
Saint Francis City	8,142
County Anoka Subtotal	226,962
County: Carver	106,922
County: Hennepin (part)	
Chanhassen City	0
Hanover City	666
Rockford City	455
County Hennepin Subtotal	1,121

	Population
District 6	
County: Sherburne	97,183
County: Stearns (part)	
Clearwater City	4
Cold Spring City	4,164
Collegeville Township	3,344
Eden Lake Township	1,584
Fair Haven Township	1,517
Kimball City	799
Luxemburg Township	631
Lynden Township	1,816
Maine Prairie Township	1,886
Richmond City (part)	0
Subtotal	127
Richmond City Subtotal	
Rockville City	2,382
Saint Augusta City	3,497
Saint Cloud City	55,280
Saint Joseph City	7,029
Saint Joseph Township	946
Waite Park City	8,341
Wakefield Township	2,745
County Stearns Subtotal	96,092
County: Washington (part)	
Forest Lake City	20,611
Hugo City	15,766
Marine on Saint Croix City	664
May Township	2,670
Scandia City	3,984
County Washington Subtotal	43,695
County: Wright	141,337
District 6 Total	713,312
District 7	
County: Becker	35,183
County: Beltrami (part)	
Alaska Township	195
Battle Township	43
Bemidji City	15,379
Bemidji Township	2,865
Benville Township	98
Buzzle Township	306
Eckles Township	2,014
Grant Valley Township	2,431
Hamre Township	19
Jones Township	271
Kelliher City	258

	Population
District 7	
County: Beltrami (part)	
Kelliher Township	126
Lammers Township	602
Lee Township	41
Liberty Township	746
Lower Red Lake Unorganized	5,437
Maple Ridge Township	113
Minnie Township	22
North Beltrami Unorganized	32
Northern Township (part)	0
Subtotal	2,787
Northern Township Subtotal	2,787
Quiring Township	81
Roosevelt Township	225
Shotley Brook Unorganized	27
Shotley Township	32
Solway City	73
Spruce Grove Township	48
Steenerson Township	24
Upper Red Lake Unorganized	6
Waskish Township	95
Wilton City	263
Woodrow Township	83
County Beltrami Subtotal	34,742
County: Big Stone	5,166
County: Chippewa	12,598
County: Clay	65,318
County: Clearwater	8,524
County: Cottonwood	11,517
County: Douglas	39,006
County: Grant	6,074
County: Kandiyohi	43,732
County: Kittson	4,207
County: Lac qui Parle	6,719
County: Lake of the Woods	3,763
County: Lincoln	5,640
County: Lyon	25,269
County: Mahnomen	5,411
County: Marshall	9,040
County: McLeod	36,771
County: Meeker	23,400
County: Murray	8,179
County: Norman	6,441
County: Otter Tail	60,081
County: Pennington	13,992
County: Pipestone	9,424

	Population
District 7	
County: Polk	31,192
County: Pope	11,308
County: Red Lake	3,935
County: Redwood	15,425
County: Renville	14,723
County: Roseau	15,331
County: Sibley	14,836
County: Stearns (part)	
Albany City	2,780
Albany Township	983
Ashley Township	258
Avon City	1,618
Avon Township	2,066
Belgrade City	738
Brockway Township	2,895
Brooten City	626
Crow Lake Township	350
Crow River Township	320
Eden Valley City	478
Elrosa City	213
Farming Township	982
Freeport City	675
Getty Township	347
Greenwald City	197
Grove Township	480
Holding Township	1,182
Holdingford City	743
Krain Township	984
Lake George Township	308
Lake Henry City	72
Lake Henry Township	248
Le Sauk Township	1,532
Meire Grove City	180
Melrose City	3,602
Melrose Township	729
Millwood Township	950
Munson Township	1,447
New Munich City	356
North Fork Township	273
Oak Township	623
Paynesville City	2,315
Paynesville Township	1,494
Raymond Township	230
Richmond City (part)	0
Subtotal	1,352
Richmond City Subtotal	1,352

	Population
District 7	
County: Stearns (part)	
Roscoe City	130
Saint Anthony City	91
Saint Martin City	312
Saint Martin Township	438
Saint Rosa City	58
Saint Stephen City	797
Saint Wendel Township	2,115
Sartell City	17,190
Sauk Centre City	4,555
Sauk Centre Township	1,180
Spring Hill City	68
Spring Hill Township	337
Zion Township	303
County Stearns Subtotal	62,200
County: Stevens	9,671
County: Swift	9,838
County: Todd	25,262
County: Traverse	3,360
County: Wilkin	6,506
County: Yellow Medicine	9,528
District 7 Total	713,312
District 8	
County: Aitkin	15,697
County: Beltrami (part)	
Birch Township	103
Blackduck City	841
Brook Lake Unorganized	251
Cormant Township	202
Durand Township	227
Frohn Township	1,530
Funkley City	18
Hagali Township	360
Hines Township	612
Hornet Township	209
Langor Township	208
Moose Lake Township	268
Nebish Township	279
Northern Township (part)	12
Subtotal	958
Northern Township Subtotal	958
O'Brien Township	47
Port Hope Township	745
Shooks Township	187
Sugar Bush Township	232
Summit Township	267

	Population
District 8	
County: Beltrami (part)	
Taylor Township	113
Ten Lake Township	1,030
Tenstrike City	186
Turtle Lake Township	1,299
Turtle River City	88
Turtle River Township	1,226
County Beltrami Subtotal	11,486
County: Benton	41,379
County: Carlton	36,207
County: Cass	30,066
County: Chisago	56,621
County: Cook	5,600
County: Crow Wing	66,123
County: Hubbard	21,344
County: Isanti	41,135
County: Itasca	45,014
County: Kanabec	16,032
County: Koochiching	12,062
County: Lake	10,905
County: Mille Lacs	26,459
County: Morrison	34,010
County: Pine	28,876
County: St. Louis	200,231
County: Wadena	14,065
District 8 Total	713,312
State Total	5,706,494

Tab C

Population Summary

Thursday, December 2, 2021 10:11 PM

Largest District:	713,312	Deviation:	0.00 Percent	Persons
Smallest District:	713,311	Deviation:	0.00 Percent	-1 Persons
Overall Range:			0.00 Percent	1 Persons
		Mean Deviation:	0.00 Percent	Persons
		Standard Deviation:		.43 Persons
Ideal District:	713,312			

District	Population	Deviation	% Devn.
1	713,312	0	0.00%
2	713,312	0	0.00%
3	713,312	0	0.00%
4	713,311	-1	0.00%
5	713,311	-1	0.00%
6	713,312	0	0.00%
7	713,312	0	0.00%
8	713,312	0	0.00%

State Total: 5,706,494

Tab D

Minority Representation - Voting-Age Population

Thursday, December 2, 2021 10:06 PM

Minority Opportunity Districts

(30% or more Total Minority)

District	Black	%	Asian	%	Hispanic	%	Indian	%	Other	%	Total Minority	%
4	52,463	9.6	66,020	12.0	34,187	6.2	2,773	0.5	20,704	3.8	176,147	32.1
5	83,548	14.6	35,036	6.1	49,006	8.6	5,153	0.9	25,842	4.5	198,585	34.7

District	Black	%	Asian	%	Hispanic	%	Indian	%	Other	%	Total Minority	%
1	16,992	3	15,104	3	31,612	6	1,460	0	13,815	3	78,983	14
2	27,859	5	29,078	5	33,703	6	2,671	0	18,694	3	112,005	21
3	43,552	8	45,191	8	23,904	4	1,667	0	19,046	3	133,360	24
4	52,463	10	66,020	12	34,187	6	2,773	1	20,704	4	176,147	32
5	83,548	15	35,036	6	49,006	9	5,153	1	25,842	5	198,585	35
6	18,758	4	15,253	3	16,046	3	1,814	0	16,911	3	68,782	13
7	7,116	1	4,867	1	22,178	4	11,750	2	14,882	3	60,793	11
8	7,065	1	4,132	1	8,131	1	12,272	2	19,725	4	51,325	9

State Totals

257,353	6	214,681	5	218,767	5	39,560	1	149,619	0	879,980	20
----------------	----------	----------------	----------	----------------	----------	---------------	----------	----------------	----------	----------------	-----------

Note: Percentage totals may not add due to rounding.

Definitions

- Black = 18+ Non-Hispanic Black or African American + Non-Hispanic Black or African American and White
- Asian = 18+ Non-Hispanic Asian + Non-Hispanic Asian and White
- Hispanic = 18+ Hispanic of Any Race
- Indian = 18+ Non-Hispanic American Indian and Alaska Native + Non-Hispanic American Indian and Alaska Native and White
- Other = 18+ Non-Hispanic Native Hawaiian + Non-Hispanic Native Hawaiian and White + Non-Hispanic Some Other Race + Non-Hispanic Some Other Race and White + Non-Hispanic Other Multi-Race (where more than one minority race is listed)

Tab E

Minority Representation - Total Population

Thursday, December 2, 2021

10:06 PM

Minority Opportunity Districts

(30% or more Total Minority)

District	Black	%	Asian	%	Hispanic	%	Indian	%	Other	%	Total Minority	%
4	78,852	11.1	98,508	13.8	52,603	7.4	3,509	0.5	35,652	5.0	269,124	37.7
5	122,472	17.2	43,820	6.1	72,472	10.2	6,827	1.0	40,939	5.7	286,530	40.2

District	Black	%	Asian	%	Hispanic	%	Indian	%	Other	%	Total Minority	%
1	27,064	3.8%	20,066	2.8%	51,858	7.3%	1,820	0.3%	24,362	3.4%	125,170	17.5%
2	44,678	6.3%	39,092	5.5%	53,430	7.5%	3,724	0.5%	34,758	4.9%	175,682	24.6%
3	67,071	9.4%	62,936	8.8%	37,706	5.3%	2,212	0.3%	34,646	4.9%	204,571	28.7%
4	78,852	11.1%	98,508	13.8%	52,603	7.4%	3,509	0.5%	35,652	5.0%	269,124	37.7%
5	122,472	17.2%	43,820	6.1%	72,472	10.2%	6,827	1.0%	40,939	5.7%	286,530	40.2%
6	31,588	4.4%	21,025	2.9%	26,501	3.7%	2,330	0.3%	30,982	4.3%	112,426	15.8%
7	11,561	1.6%	6,754	0.9%	37,742	5.3%	18,464	2.6%	25,917	3.6%	100,438	14.1%
8	9,564	1.3%	5,259	0.7%	13,328	1.9%	18,160	2.5%	32,362	4.5%	78,673	11.0%

State Totals

392,850 6.9% 297,460 5.2% 345,640 6.1% 57,046 1.0% 259,618 4.5% 879,980 23.7%

Note: Percentage totals may not add due to rounding.

Definitions

- Black = Non-Hispanic Black or African American + Non-Hispanic Black or African American and White
- Asian = Non-Hispanic Asian + Non-Hispanic Asian and White
- Hispanic = Hispanic of Any Race
- Indian = Non-Hispanic American Indian and Alaska Native
+ Non-Hispanic American Indian and Alaska Native and White
- Other = Non-Hispanic Native Hawaiian + Non-Hispanic Native Hawaiian and White
+ Non-Hispanic Some Other Race + Non-Hispanic Some Other Race and White
+ Non-Hispanic Other Multi-Race (where more than one minority race is listed)

Tab F

Communities of Interest (Landscape, 11x8.5) - Reservations

Thursday, December 2, 2021

10:10 PM

Indian Reservation	District	Population	%	Contiguous
Bois Forte MN	8	902	100.0	No
Bois Forte MN	8	82	100.0	No
Fond du Lac MN	8	4,180	100.0	Yes
Fond du Lac MN	8	0	0.0	No
Grand Portage MN	8	0	0.0	Yes
Grand Portage MN	8	618	100.0	Yes
Ho-Chunk Nation MN	1	0	0.0	No
Leech Lake MN	8	11,388	100.0	Yes
Leech Lake MN	8	0	0.0	Yes
Lower Sioux MN	7	534	100.0	Yes
Mille Lacs MN	8	4,618	100.0	Yes
Mille Lacs MN	8	149	100.0	No
Minnesota Chippewa MN	7	1	12.5	No
Minnesota Chippewa MN	8	7	87.5	No
Prairie Island MN	2	149	100.0	Yes
Prairie Island MN	2	161	100.0	Yes
Red Lake MN	7	5,506	100.0	Yes
Red Lake MN	8	0	0.0	No
Shakopee Mdewakanton Sioux MN	2	454	100.0	No
Shakopee Mdewakanton Sioux MN	2	325	100.0	No

Communities of Interest (Landscape, 11x8.5)

AndersonPlaintiffsCD

Indian Reservation	District	Population	%	Contiguous
Upper Sioux MN	7	117	100.0	Yes
Upper Sioux MN	7	3	100.0	Yes
White Earth MN	7	9,695	100.0	Yes
White Earth MN	7	31	100.0	No

Indian Reservation -- Listed by District

Population %

District 1

Ho-Chunk Nation MN	0	0.0
--------------------	---	-----

District 1 Totals

District 2

Prairie Island MN	149	100.0
Prairie Island MN	161	100.0
Shakopee Mdewakanton Sioux MN	454	100.0
Shakopee Mdewakanton Sioux MN	325	100.0

District 2 Totals **1,089**

District 7

Lower Sioux MN	534	100.0
Minnesota Chippewa MN (part)	1	12.5
Red Lake MN (part)	5,506	100.0
Upper Sioux MN	117	100.0
Upper Sioux MN	3	100.0
White Earth MN	9,695	100.0
White Earth MN	31	100.0

District 7 Totals **15,887**

	Population	%
<i>District 8</i>		
Bois Forte MN	902	100.0
Bois Forte MN	82	100.0
Fond du Lac MN	4,180	100.0
Fond du Lac MN	0	0.0
Grand Portage MN	0	0.0
Grand Portage MN	618	100.0
Leech Lake MN	11,388	100.0
Leech Lake MN	0	0.0
Mille Lacs MN	4,618	100.0
Mille Lacs MN	149	100.0
Minnesota Chippewa MN (part)	7	87.5
Red Lake MN (part)	0	0.0
District 8 Totals	21,944	

Summary Statistics

Number of Indian Reservation not split	2
Number of Indian Reservation split	11
Number of Indian Reservation split in 2	11
Total number of splits	22

Tab G

Contiguity Report

Thursday, December 2, 2021

10:04 PM

District	Number of Distinct Areas
1	1
2	1
3	1
4	1
5	1
6	1
7	1
8	1

Tab H

Political Subdivison Splits Between Districts

Thursday, December 2, 2021

10:06 PM

Split Counts

Number of subdivisions split into more than one district:	Number of splits involving no population:
Counties	Counties
Cities and Towns	Cities and Towns
Voting Districts	Voting Districts
Number of times a subdivision is split into multiple districts:	
Counties	
Cities and Towns	
Voting Districts	

Counties	Cities and Towns	Voting Districts	District	Population
-----------------	-------------------------	-------------------------	-----------------	-------------------

Split Counties:

Anoka		3	77,421
Anoka		5	59,504
Anoka		6	226,962
Beltrami		7	34,742
Beltrami		8	11,486
Hennepin		3	635,891
Hennepin		5	644,553
Hennepin		6	1,121
Ramsey		4	543,098
Ramsey		5	9,254
Rice		1	45,837
Rice		2	21,260
Stearns		6	96,092
Stearns		7	62,200
Washington		2	53,660
Washington		4	170,213
Washington		6	43,695

Split MCDs:

Anoka	Blaine City	3	13,822
Anoka	Blaine City	6	56,400
Beltrami	Northern Township	7	2,787
Beltrami	Northern Township	8	958
Hennepin	Edina City	3	48,247
Hennepin	Edina City	5	5,247
Ramsey	New Brighton City	4	17,845
Ramsey	New Brighton City	5	5,609
Rice	Dundas City	1	862
Rice	Dundas City	2	850
Stearns	Richmond City	6	127
Stearns	Richmond City	7	1,352
Washington	Woodbury City	2	3,394
Washington	Woodbury City	4	71,688

Political Subdivison Splits Between Districts

Counties	Cities and Towns	Voting Districts	District	Population
<i>Split VTDs:</i>				
Anoka	Blaine City	Blaine W-1 P-3	3	2,127
Anoka	Blaine City	Blaine W-1 P-3	6	0
Anoka	Blaine City	Blaine W-2 P-1	3	1,753
Anoka	Blaine City	Blaine W-2 P-1	6	566
Anoka	Blaine City	Blaine W-2 P-2B	3	499
Anoka	Blaine City	Blaine W-2 P-2B	6	2,203
Beltrami	Northern Township	Northern Twp P-1	7	2,787
Beltrami	Northern Township	Northern Twp P-1	8	958
Hennepin	Edina City	Edina P-3	3	720
Hennepin	Edina City	Edina P-3	5	2,532
Ramsey	New Brighton City	New Brighton P-3	4	2,846
Ramsey	New Brighton City	New Brighton P-3	5	668
Ramsey	New Brighton City	New Brighton P-4	4	134
Ramsey	New Brighton City	New Brighton P-4	5	3,165
Ramsey	New Brighton City	New Brighton P-5	4	3,177
Ramsey	New Brighton City	New Brighton P-5	5	0
Rice	Dundas City	Dundas	1	862
Rice	Dundas City	Dundas	2	850
Stearns	Richmond City	Richmond	6	127
Stearns	Richmond City	Richmond	7	1,352
Washington	Woodbury City	Woodbury P-14	2	1,218
Washington	Woodbury City	Woodbury P-14	4	2,694
Washington	Woodbury City	Woodbury P-15	2	2,006
Washington	Woodbury City	Woodbury P-15	4	4,069
Washington	Woodbury City	Woodbury P-16	2	105
Washington	Woodbury City	Woodbury P-16	4	6,414
Washington	Woodbury City	Woodbury P-5	2	65
Washington	Woodbury City	Woodbury P-5	4	4,253

Tab I

Measures of Compactness Report

Thursday, December 2, 2021

10:06 PM

	Reock	Polsby-Popper	Area/Convex Hull	Population Polygon	Population Circle
Mean	0.42	0.33	0.76	0.71	0.36
Min	0.23	0.21	0.64	0.28	0.14
Max	0.56	0.52	0.88	0.92	0.59
Std. Dev.	0.12	0.10	0.08	0.23	0.19
Sum					

Higher Number is Better

Lower Number is Better

District	Reock	Polsby-Popper	Area/Convex Hull	Population Polygon	Population Circle
1	0.23	0.30	0.83	0.90	0.16
2	0.35	0.31	0.71	0.78	0.27
3	0.56	0.27	0.70	0.47	0.38
4	0.53	0.52	0.88	0.92	0.59
5	0.50	0.41	0.83	0.86	0.59
6	0.36	0.22	0.64	0.28	0.20
7	0.30	0.21	0.73	0.63	0.14
8	0.49	0.36	0.79	0.86	0.55

Measures of Compactness Summary





Reock	The measure is always between 0 and 1, with 1 being the most compact.
Polsby-Popper	The measure is always between 0 and 1, with 1 being the most compact.
Area / Convex Hull	The measure is always between 0 and 1, with 1 being the most compact.
Population Polygon	The measure is always between 0 and 1, with 1 being the most compact.
Population Circle	The measure is always between 0 and 1, with 1 being the most compact.

Tab J

Districts & Their Incumbents

Saturday, December 4, 2021

2:25 PM

Number of Incumbents Paired:	0	
Number of Open Seats:	0	
Democrat v. Democrat:	0	
Republican v. Republican:	0	
Democrat v. Republican:	0	

CD	Name	Party	Previous District
1	Jim Hagedorn	R	1
2	Angie Craig	DFL	2
3	Dean Phillips	DFL	3
4	Betty McCollum	DFL	4
5	Ilhan Omar	DFL	5
6	Tom Emmer	R	6
7	Michelle Fischbach	R	7
8	Pete Stauber	R	8